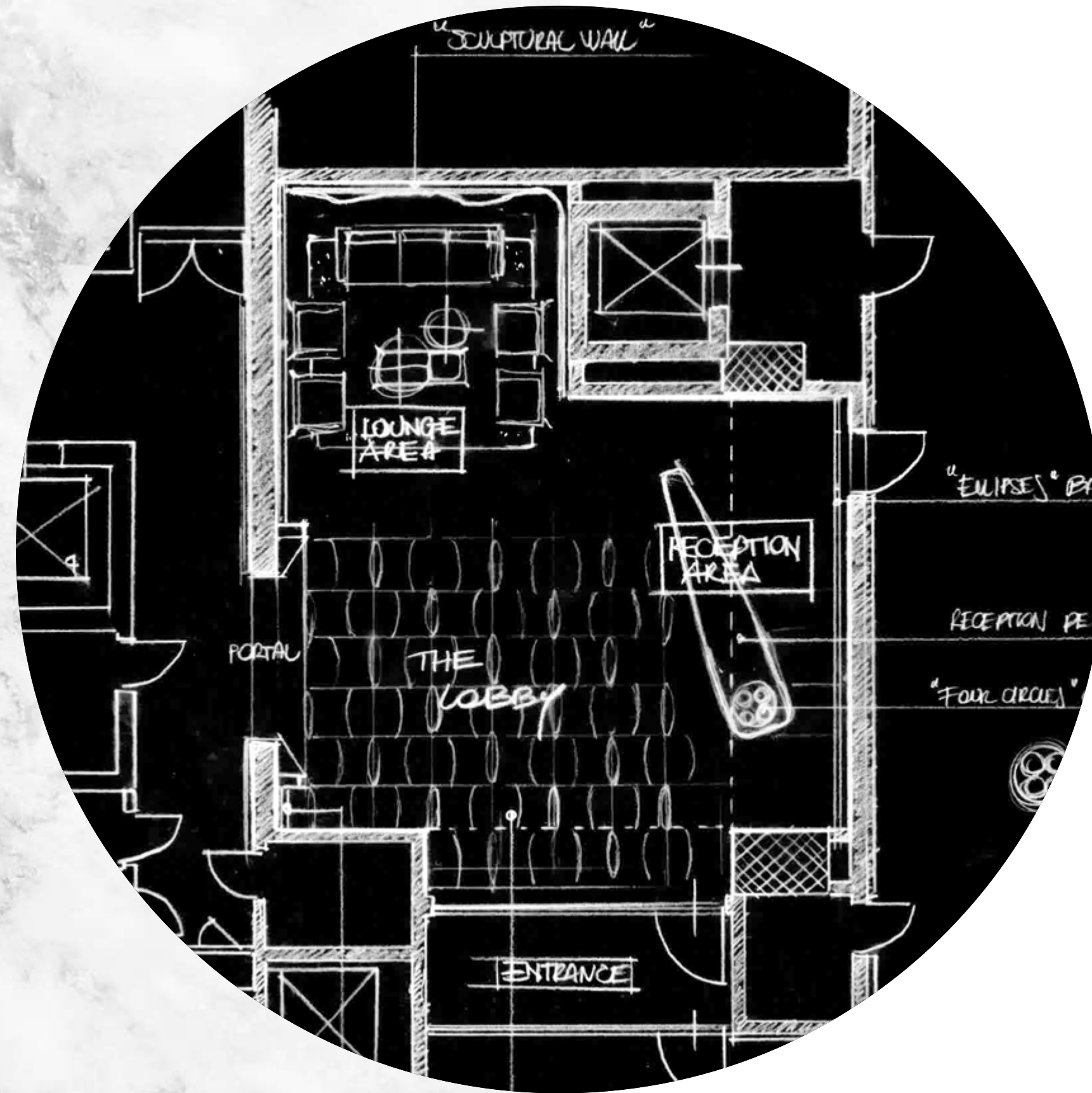


DAR AL ARKAN

FLOOR PLANS



Located in J One Tower B









RESIDENCES SPECIFICATIONS

Foyer – Living Area – Dining Area

Marble flooring and skirting
Gypsum ceiling finished with paint
Paint with accent wallpaper
Wood paneling in selected areas

Kitchen

Marble flooring and skirting
Paint and quartz walls
Gypsum ceiling finished with paint
Silestone high quality quartz counter top
Lacquered paint cabinets
Fridge, Oven, Hob, Hood, Microwave,
Dishwasher, Washing Machine,
Beverage Cooler
Miele, Bosch Premium Line or Equivalent

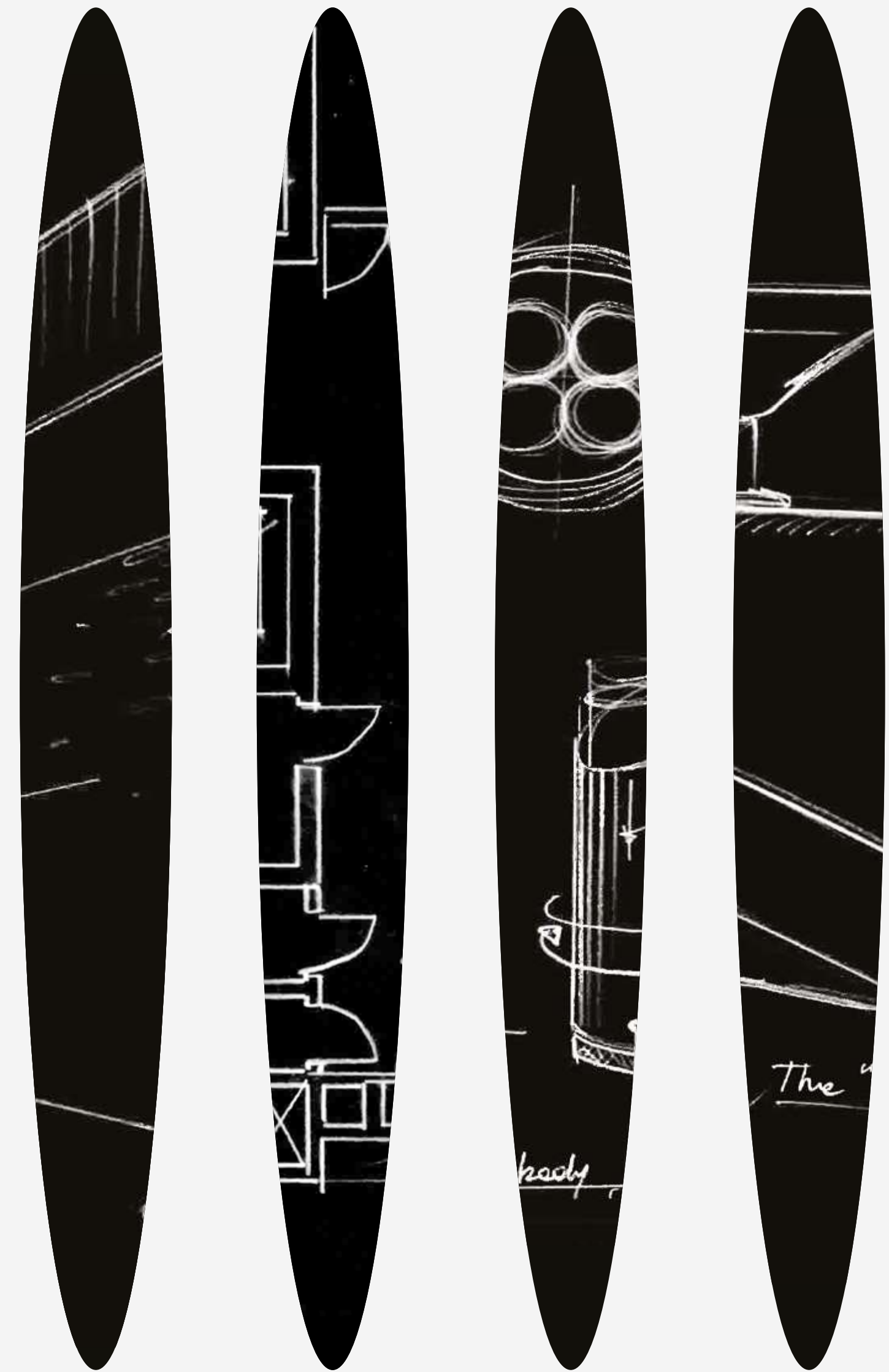
Bedrooms

Semi Engineered wood flooring and skirting
Paint with accent wallpaper
Gypsum ceiling finished with paint
Built-in lacquered joinery

Bathrooms

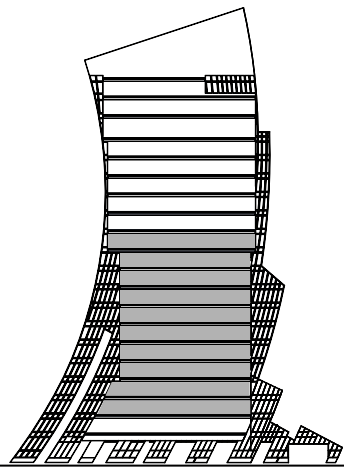
Marble flooring and skirting
Marble / wallpaper walls
Moisture resistant gypsum ceiling finished
with paint
Marble counter top
Lacquered / Veneer joinery
Gessi, Newform or equivalent
sanitary fixtures
Kohler, Duravit, Geberit or equivalent
sanitaryware

All pictures, plans, layouts, information, data and details included in this brochure are indicative only and may change at any time up to the final 'as built' status in accordance with final designs of the project, regulatory approvals and planning permissions. All accessories and interior finishes such as wallpaper, chandeliers, furniture, electronics, white goods, curtains, hard and soft landscaping, pavements, features, gym, swimming pool(s) and other elements displayed in the brochure, or within the show apartment or between the plot boundary and the unit, are not part of the unit and are shown for illustrative purposes only.



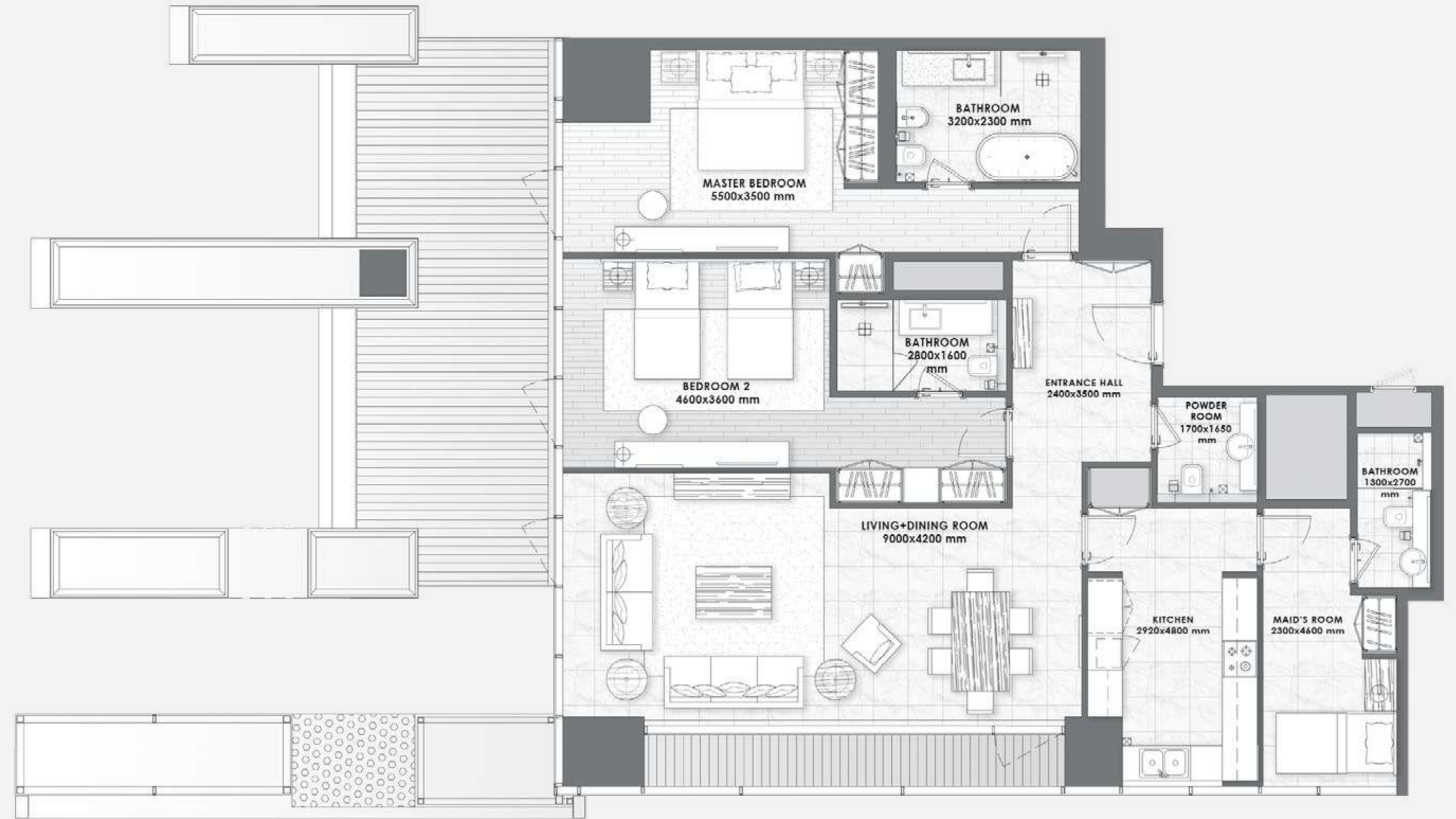
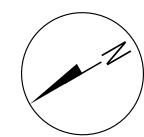
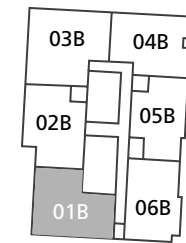
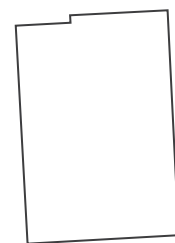
2 BEDROOMS

- Type 7 -



FLOORS
2 to 10

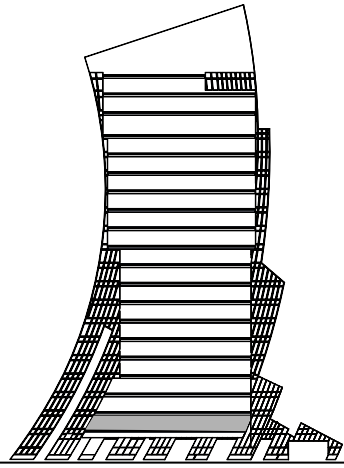
Unit Area	1,556.89 - 1,570.89 sq.ft.
Balcony Area	208.39 - 416.13 sq.ft.
Total Area	1,765.28 - 1,987.02 sq.ft.



All pictures, plans, layouts, information, data and details included in this brochure are indicative only and may change at any time up to the final 'as built' status in accordance with final designs of the project, regulatory approvals and planning permissions. All accessories and interior finishes such as wallpaper, chandeliers, furniture, electronics, white goods, curtains, hard and soft landscaping, pavements, features, gym, swimming pool(s) and other elements displayed in the brochure, or within the show apartment or between the plot boundary and the unit, are not part of the unit and are shown for illustrative purposes only.

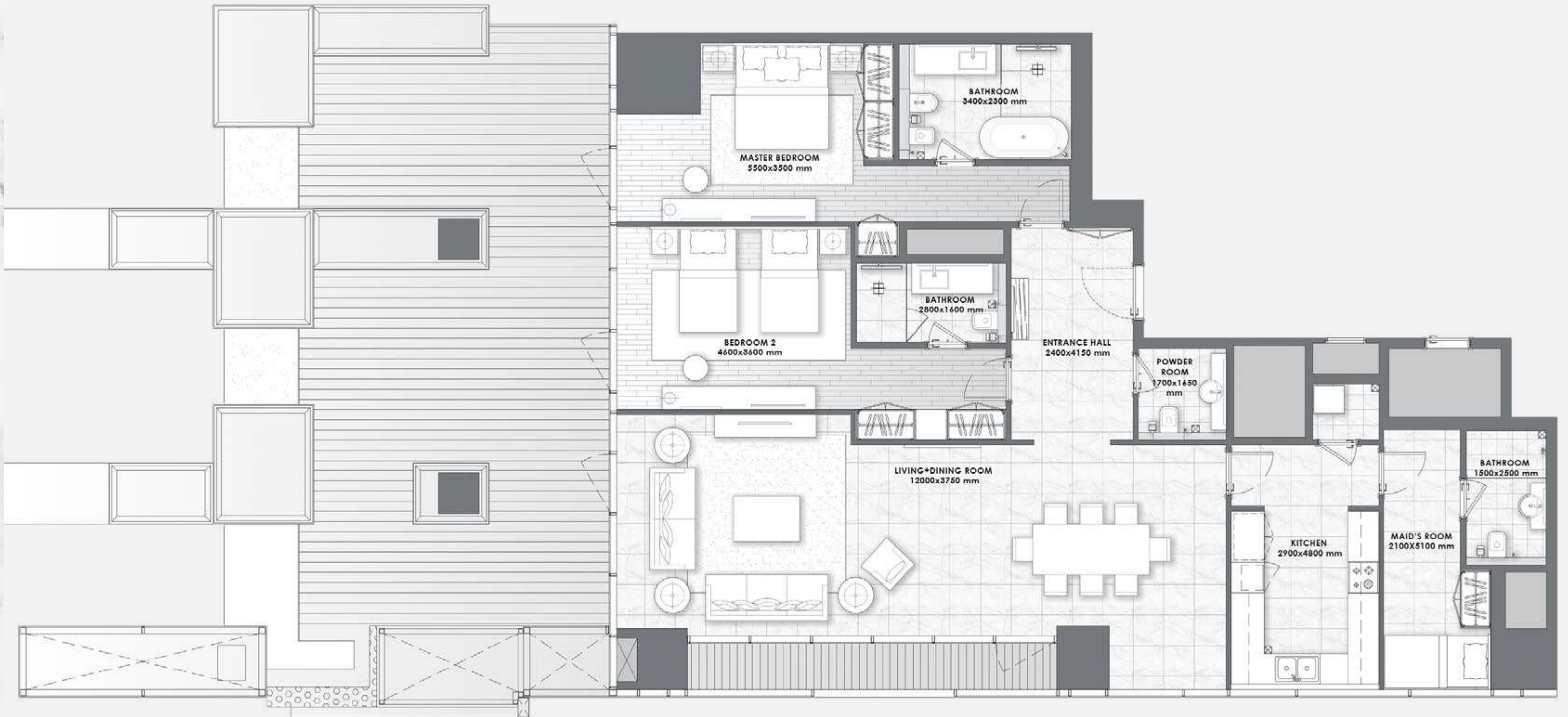
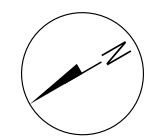
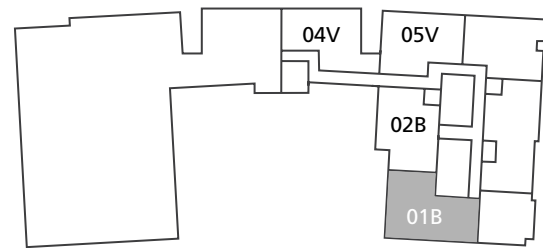
2 BEDROOMS

- Type 7A -



FLOOR
1

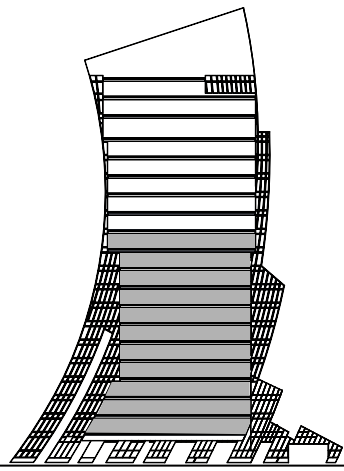
Unit Area	1,739.77 sq.ft.
Balcony Area	797.50 sq.ft.
Total Area	2,537.27 sq.ft.



All pictures, plans, layouts, information, data and details included in this brochure are indicative only and may change at any time up to the final 'as built' status in accordance with final designs of the project, regulatory approvals and planning permissions. All accessories and interior finishes such as wallpaper, chandeliers, furniture, electronics, white goods, curtains, hard and soft landscaping, pavements, features, gym, swimming pool(s) and other elements displayed in the brochure, or within the show apartment or between the plot boundary and the unit, are not part of the unit and are shown for illustrative purposes only.

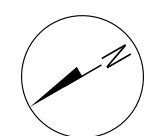
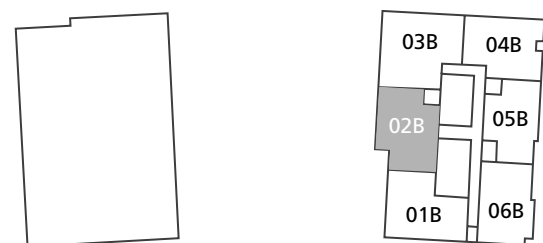
2 BEDROOMS

- Type 8 -



FLOORS
1 to 10

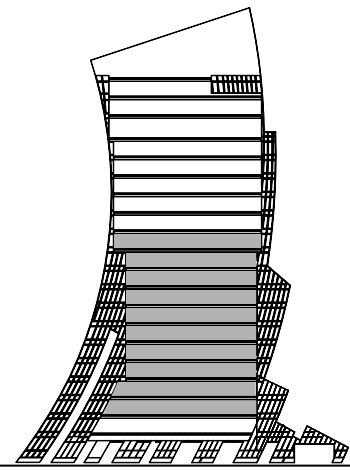
Unit Area	1,701.56 - 1,713.51 sq.ft.
Balcony Area	137.89 - 608.05 sq.ft.
Total Area	1,848.06 - 2,309.61 sq.ft.



All pictures, plans, layouts, information, data and details included in this brochure are indicative only and may change at any time up to the final 'as built' status in accordance with final designs of the project, regulatory approvals and planning permissions. All accessories and interior finishes such as wallpaper, chandeliers, furniture, electronics, white goods, curtains, hard and soft landscaping, pavements, features, gym, swimming pool(s) and other elements displayed in the brochure, or within the show apartment or between the plot boundary and the unit, are not part of the unit and are shown for illustrative purposes only.

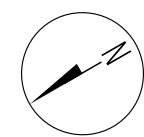
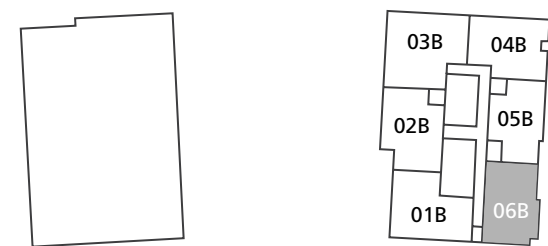
2 BEDROOMS

- Type 9 -



FLOORS
2 to 10

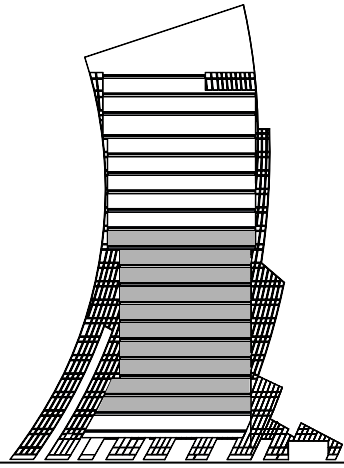
Unit Area	1,464.75 - 1,473.58 sq.ft.
Balcony Area	384.38 - 395.04 sq.ft.
Total Area	1,857.96 - 1,859.79 sq.ft.



All pictures, plans, layouts, information, data and details included in this brochure are indicative only and may change at any time up to the final 'as built' status in accordance with final designs of the project, regulatory approvals and planning permissions. All accessories and interior finishes such as wallpaper, chandeliers, furniture, electronics, white goods, curtains, hard and soft landscaping, pavements, features, gym, swimming pool(s) and other elements displayed in the brochure, or within the show apartment or between the plot boundary and the unit, are not part of the unit and are shown for illustrative purposes only.

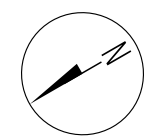
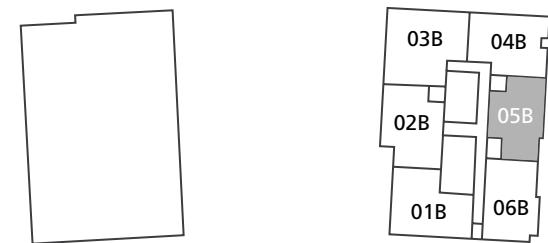
2 BEDROOMS

- Type 10 -



FLOORS
2 to 10

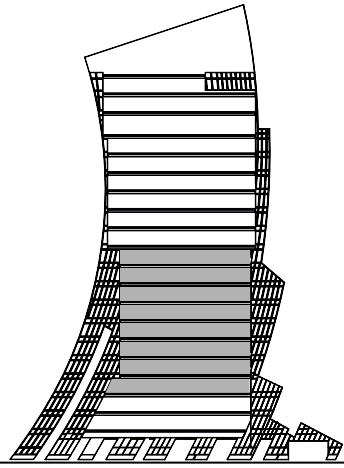
Unit Area	1,570.13 - 1,575.62 sq.ft.
Balcony Area	508.59 sq.ft.
Total Area	2,078.73 - 2,084.22 sq.ft.



All pictures, plans, layouts, information, data and details included in this brochure are indicative only and may change at any time up to the final 'as built' status in accordance with final designs of the project, regulatory approvals and planning permissions. All accessories and interior finishes such as wallpaper, chandeliers, furniture, electronics, white goods, curtains, hard and soft landscaping, pavements, features, gym, swimming pool(s) and other elements displayed in the brochure, or within the show apartment or between the plot boundary and the unit, are not part of the unit and are shown for illustrative purposes only.

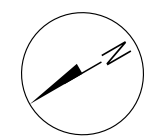
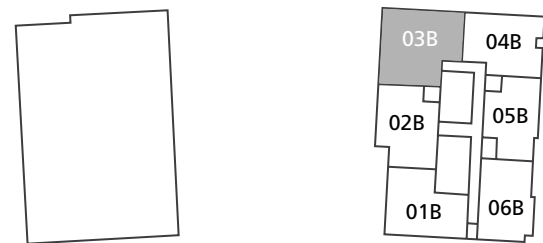
2 BEDROOMS

- Type 11 -



FLOORS
3 to 10

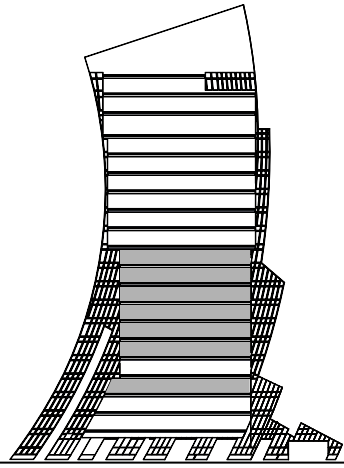
Unit Area	1,670.24 - 1,671.42 sq.ft.
Balcony Area	405.69 - 659.40 sq.ft.
Total Area	2,075.93 - 2,329.96 sq.ft.



All pictures, plans, layouts, information, data and details included in this brochure are indicative only and may change at any time up to the final 'as built' status in accordance with final designs of the project, regulatory approvals and planning permissions. All accessories and interior finishes such as wallpaper, chandeliers, furniture, electronics, white goods, curtains, hard and soft landscaping, pavements, features, gym, swimming pool(s) and other elements displayed in the brochure, or within the show apartment or between the plot boundary and the unit, are not part of the unit and are shown for illustrative purposes only.

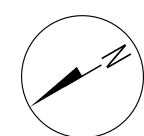
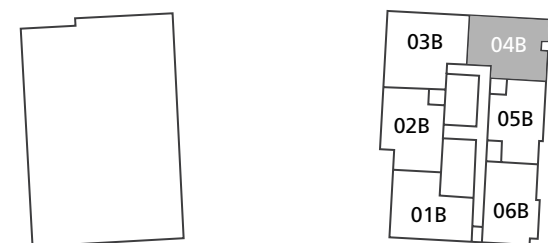
2 BEDROOMS

- Type 12 -



FLOORS
3, 5 to 10

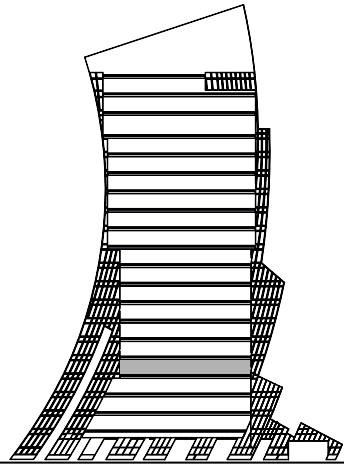
Unit Area	1,657.53 - 1,658.50 sq.ft.
Balcony Area	487.61 - 565.86 sq.ft.
Total Area	2,203.80 - 2,223.61 sq.ft.



All pictures, plans, layouts, information, data and details included in this brochure are indicative only and may change at any time up to the final 'as built' status in accordance with final designs of the project, regulatory approvals and planning permissions. All accessories and interior finishes such as wallpaper, chandeliers, furniture, electronics, white goods, curtains, hard and soft landscaping, pavements, features, gym, swimming pool(s) and other elements displayed in the brochure, or within the show apartment or between the plot boundary and the unit, are not part of the unit and are shown for illustrative purposes only.

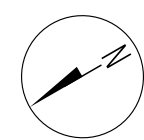
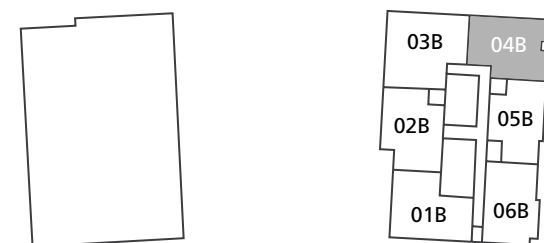
2 BEDROOMS

- Type 13 -



FLOOR
4

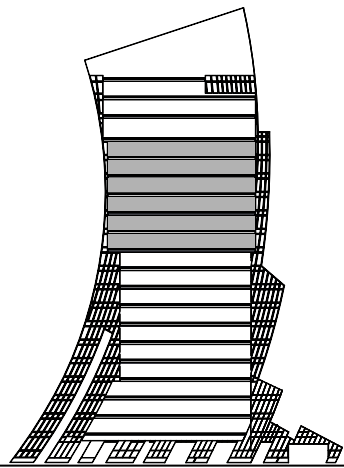
Unit Area	1,549.79 sq.ft.
Balcony Area	453.70 sq.ft.
Total Area	2,003.49 sq.ft.



All pictures, plans, layouts, information, data and details included in this brochure are indicative only and may change at any time up to the final 'as built' status in accordance with final designs of the project, regulatory approvals and planning permissions. All accessories and interior finishes such as wallpaper, chandeliers, furniture, electronics, white goods, curtains, hard and soft landscaping, pavements, features, gym, swimming pool(s) and other elements displayed in the brochure, or within the show apartment or between the plot boundary and the unit, are not part of the unit and are shown for illustrative purposes only.

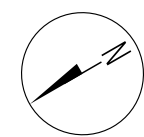
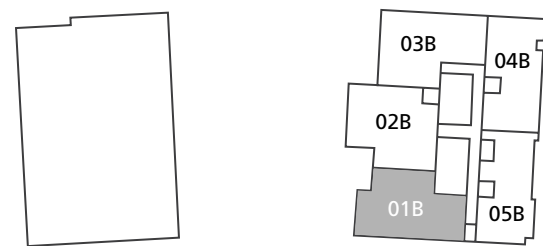
2 BEDROOMS

- Type 14 -



FLOORS
11 to 16

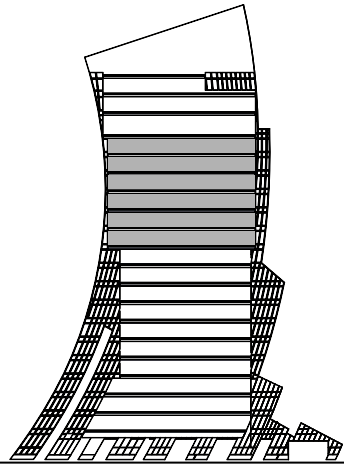
Unit Area	1,828.90 - 1,851.39 sq.ft.
Balcony Area	171.36 - 256.72 sq.ft.
Total Area	2,022.75 - 2,101.12 sq.ft.



All pictures, plans, layouts, information, data and details included in this brochure are indicative only and may change at any time up to the final 'as built' status in accordance with final designs of the project, regulatory approvals and planning permissions. All accessories and interior finishes such as wallpaper, chandeliers, furniture, electronics, white goods, curtains, hard and soft landscaping, pavements, features, gym, swimming pool(s) and other elements displayed in the brochure, or within the show apartment or between the plot boundary and the unit, are not part of the unit and are shown for illustrative purposes only.

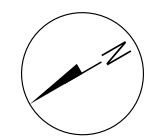
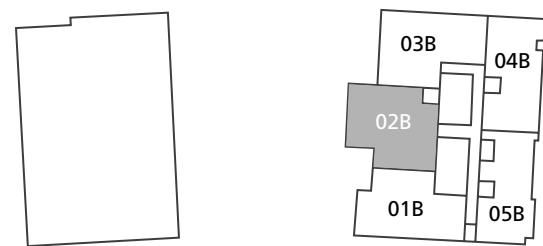
2 BEDROOMS

- Type 15 -



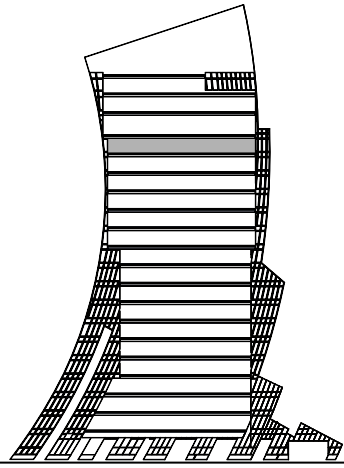
FLOORS
11 to 16

Unit Area	1,898.22 - 2,123.83 sq.ft.
Balcony Area	43.70 - 198.38 sq.ft.
Total Area	1,941.92 - 2,220.27 sq.ft.



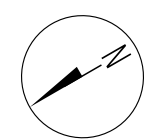
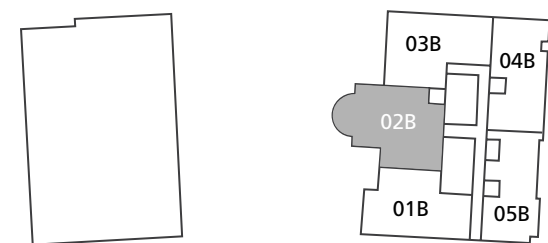
All pictures, plans, layouts, information, data and details included in this brochure are indicative only and may change at any time up to the final 'as built' status in accordance with final designs of the project, regulatory approvals and planning permissions. All accessories and interior finishes such as wallpaper, chandeliers, furniture, electronics, white goods, curtains, hard and soft landscaping, pavements, features, gym, swimming pool(s) and other elements displayed in the brochure, or within the show apartment or between the plot boundary and the unit, are not part of the unit and are shown for illustrative purposes only.

2 BEDROOMS
- Type 16 -

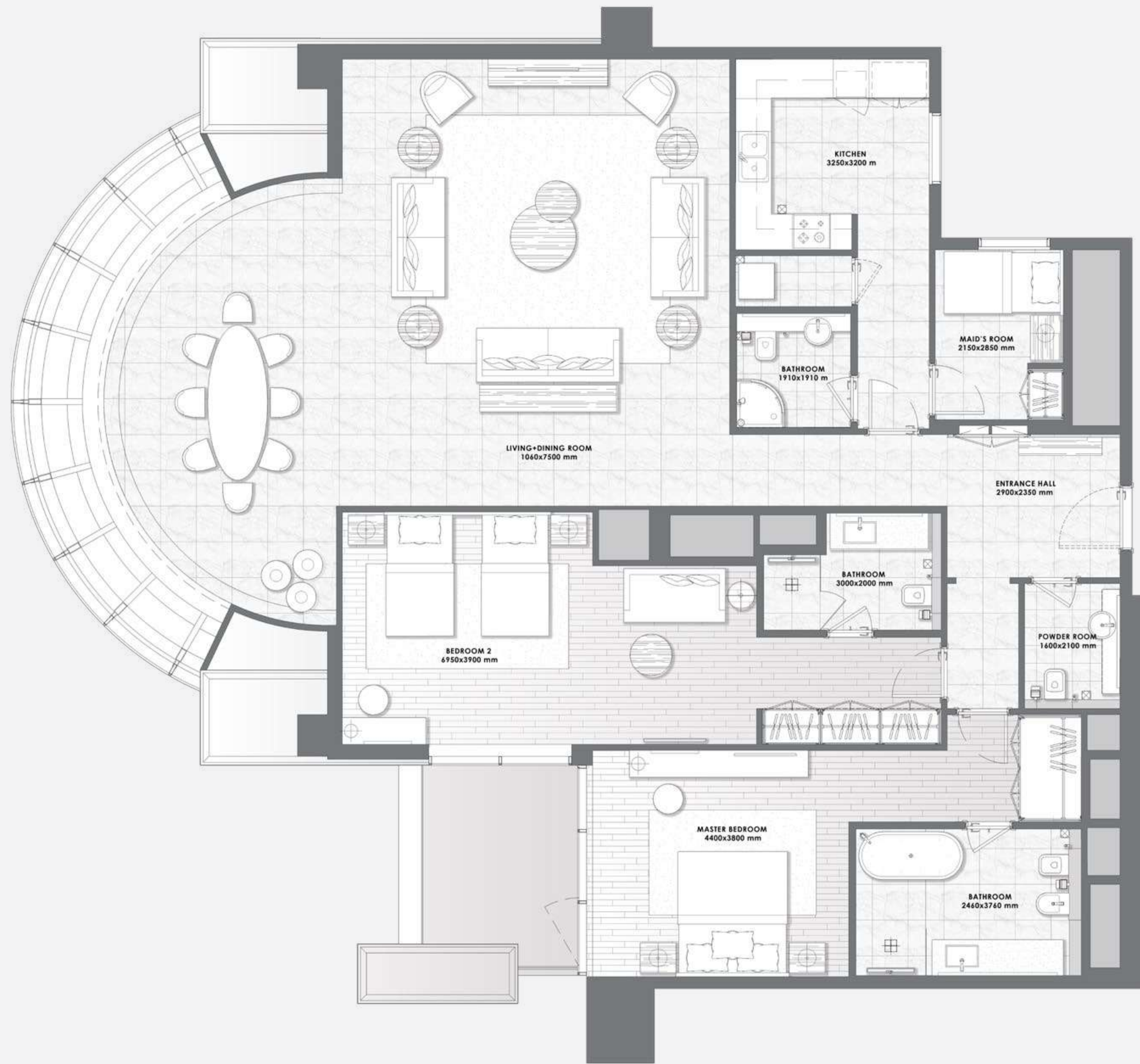


FLOOR
16

Unit Area	2,123.83 sq.ft.
Balcony Area	96.44 sq.ft.
Total Area	2,220.27 sq.ft.

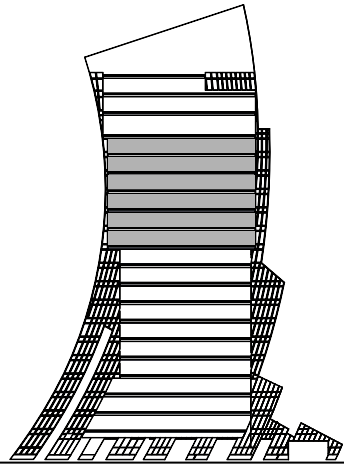


All pictures, plans, layouts, information, data and details included in this brochure are indicative only and may change at any time up to the final 'as built' status in accordance with final designs of the project, regulatory approvals and planning permissions. All accessories and interior finishes such as wallpaper, chandeliers, furniture, electronics, white goods, curtains, hard and soft landscaping, pavements, features, gym, swimming pool(s) and other elements displayed in the brochure, or within the show apartment or between the plot boundary and the unit, are not part of the unit and are shown for illustrative purposes only.



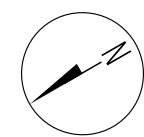
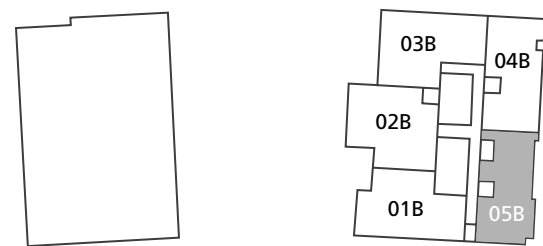
3 BEDROOMS

- Type 1 -



FLOORS
11 to 16

Unit Area	2,401.75 - 2,412.95 sq.ft.
Balcony Area	364.36 - 364.90 sq.ft.
Total Area	2,766.11 - 2,777.84 sq.ft.

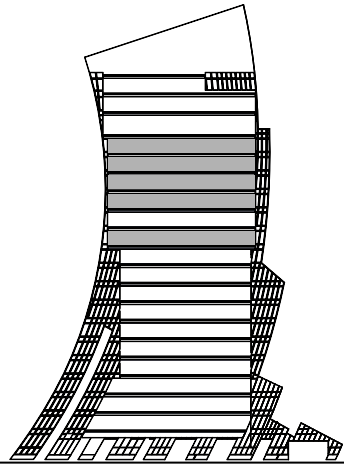


All pictures, plans, layouts, information, data and details included in this brochure are indicative only and may change at any time up to the final 'as built' status in accordance with final designs of the project, regulatory approvals and planning permissions. All accessories and interior finishes such as wallpaper, chandeliers, furniture, electronics, white goods, curtains, hard and soft landscaping, pavements, features, gym, swimming pool(s) and other elements displayed in the brochure, or within the show apartment or between the plot boundary and the unit, are not part of the unit and are shown for illustrative purposes only.



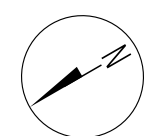
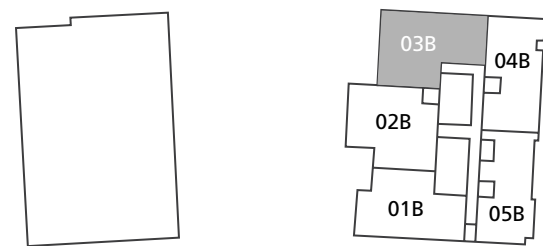
3 BEDROOMS

- Type 2 -



FLOORS
11, 13 to 16

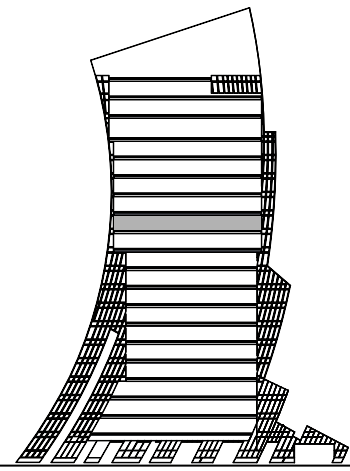
Unit Area	2,194.44 - 2,208.65 sq.ft.
Balcony Area	463.82 - 655.95 sq.ft.
Total Area	2,672.46 - 2,850.39 sq.ft.



All pictures, plans, layouts, information, data and details included in this brochure are indicative only and may change at any time up to the final 'as built' status in accordance with final designs of the project, regulatory approvals and planning permissions. All accessories and interior finishes such as wallpaper, chandeliers, furniture, electronics, white goods, curtains, hard and soft landscaping, pavements, features, gym, swimming pool(s) and other elements displayed in the brochure, or within the show apartment or between the plot boundary and the unit, are not part of the unit and are shown for illustrative purposes only.

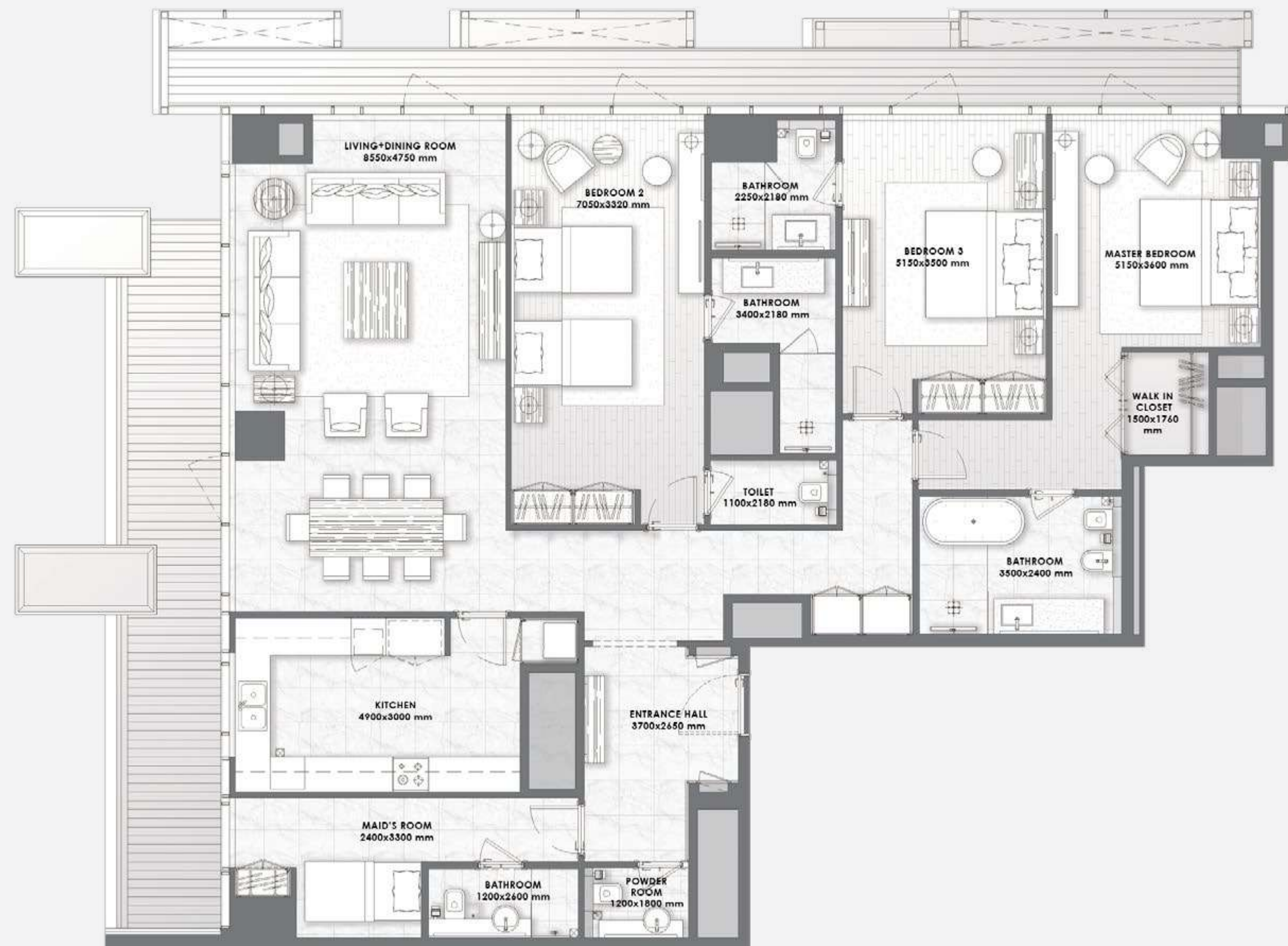
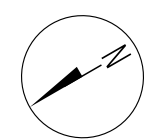
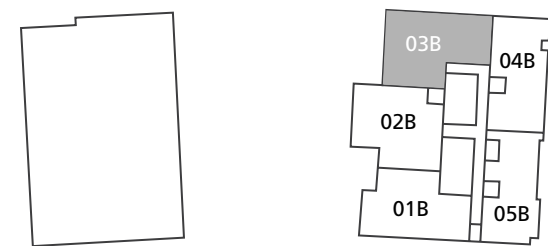
3 BEDROOMS

- Type 2A -



FLOOR
12

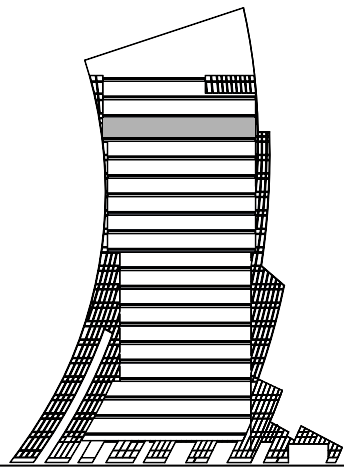
Unit Area	2,100.68 sq.ft.
Balcony Area	470.38 sq.ft.
Total Area	2,571.07 sq.ft.



All pictures, plans, layouts, information, data and details included in this brochure are indicative only and may change at any time up to the final 'as built' status in accordance with final designs of the project, regulatory approvals and planning permissions. All accessories and interior finishes such as wallpaper, chandeliers, furniture, electronics, white goods, curtains, hard and soft landscaping, pavements, features, gym, swimming pool(s) and other elements displayed in the brochure, or within the show apartment or between the plot boundary and the unit, are not part of the unit and are shown for illustrative purposes only.

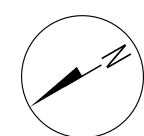
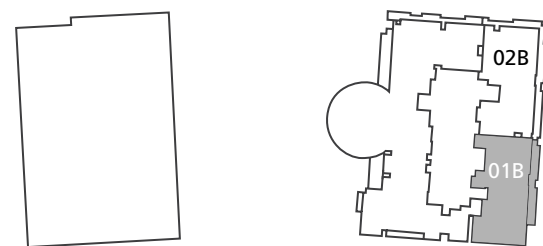
3 BEDROOMS

- Type 3 -



FLOOR
17

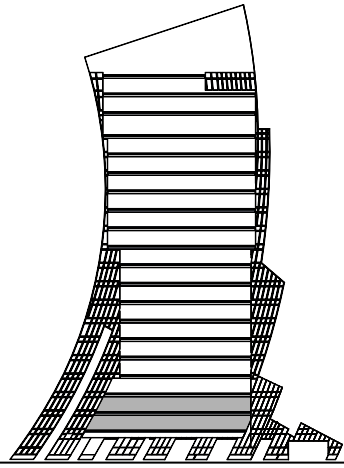
Unit Area	2,243.31 sq.ft.
Balcony Area	269.74 sq.ft.
Total Area	2,513.05 sq.ft.



All pictures, plans, layouts, information, data and details included in this brochure are indicative only and may change at any time up to the final 'as built' status in accordance with final designs of the project, regulatory approvals and planning permissions. All accessories and interior finishes such as wallpaper, chandeliers, furniture, electronics, white goods, curtains, hard and soft landscaping, pavements, features, gym, swimming pool(s) and other elements displayed in the brochure, or within the show apartment or between the plot boundary and the unit, are not part of the unit and are shown for illustrative purposes only.

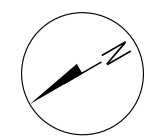
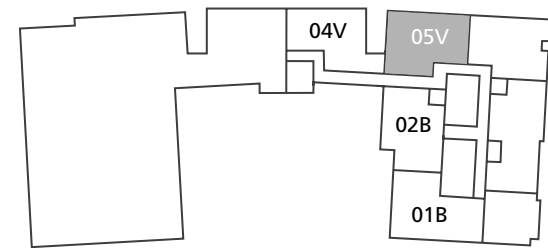


3 BEDROOMS DUPLEX – Type 2 –



FLOORS 1 & 2

Unit Area	3,083.21 sq.ft.
Balcony Area	1,278.32 sq.ft.
Total Area	4,361.54 sq.ft.



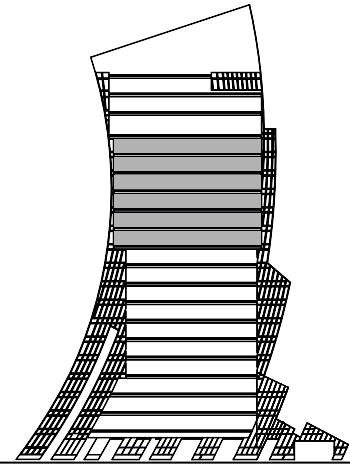
LOWER LEVEL



UPPERLEVEL

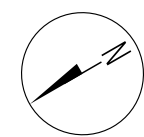
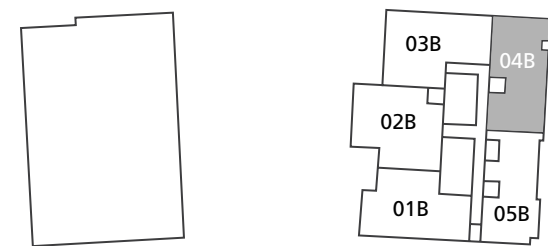
All pictures, plans, layouts, information, data and details included in this brochure are indicative only and may change at any time up to the final 'as built' status in accordance with final designs of the project, regulatory approvals and planning permissions. All accessories and interior finishes such as wallpaper, chandeliers, furniture, electronics, white goods, curtains, hard and soft landscaping, pavements, features, gym, swimming pool(s) and other elements displayed in the brochure, or within the show apartment or between the plot boundary and the unit, are not part of the unit and are shown for illustrative purposes only.

4 BEDROOMS – Type 1 –

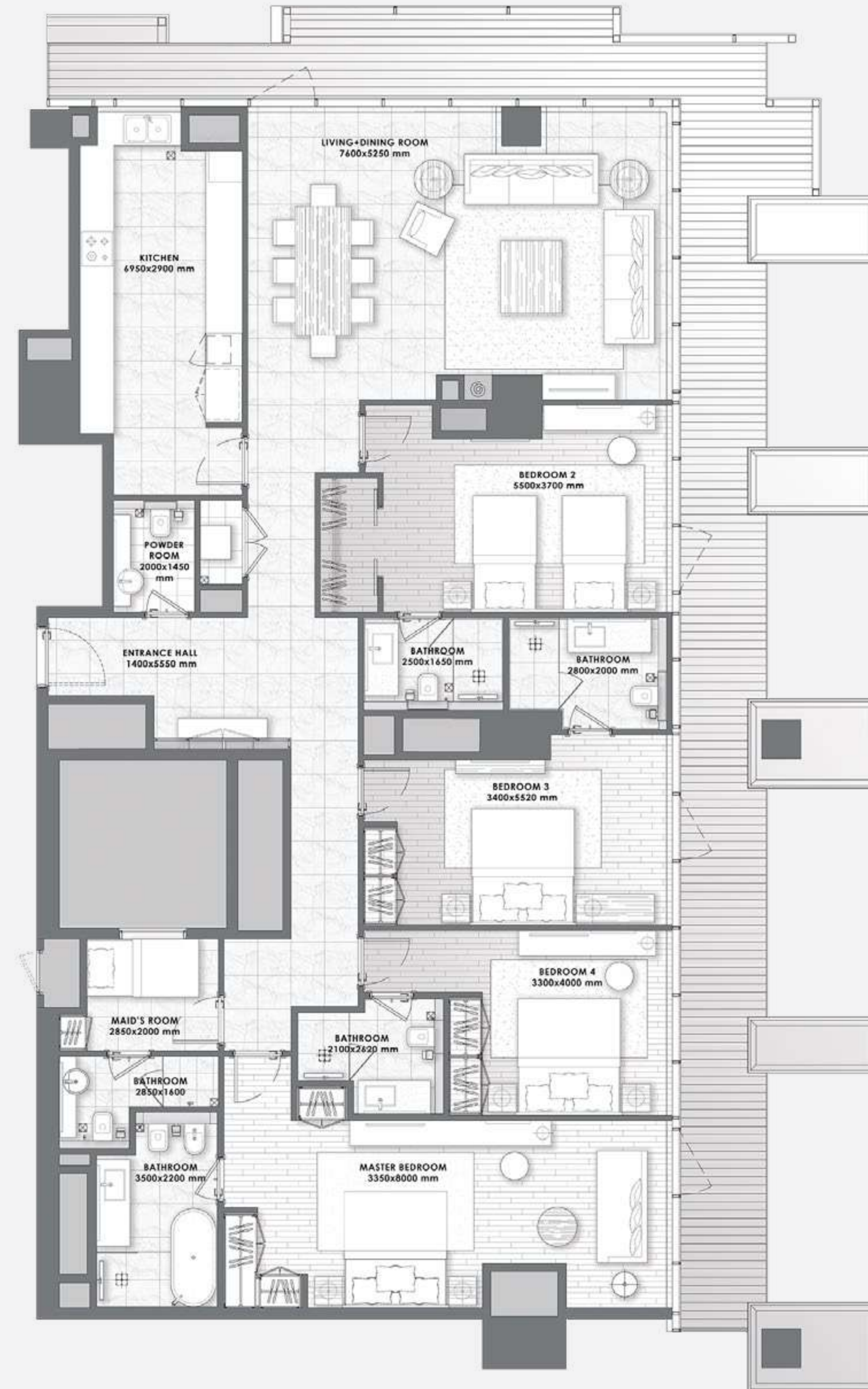


FLOORS
11 to 16

Unit Area	2,326.51 - 2,332.43 sq.ft.
Balcony Area	523.34 - 568.77 sq.ft.
Total Area	2,849.85 - 2,850.39 sq.ft.

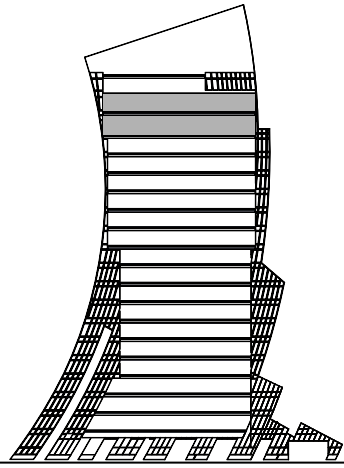


All pictures, plans, layouts, information, data and details included in this brochure are indicative only and may change at any time up to the final 'as built' status in accordance with final designs of the project, regulatory approvals and planning permissions. All accessories and interior finishes such as wallpaper, chandeliers, furniture, electronics, white goods, curtains, hard and soft landscaping, pavements, features, gym, swimming pool(s) and other elements displayed in the brochure, or within the show apartment or between the plot boundary and the unit, are not part of the unit and are shown for illustrative purposes only.



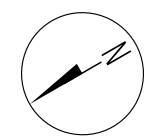
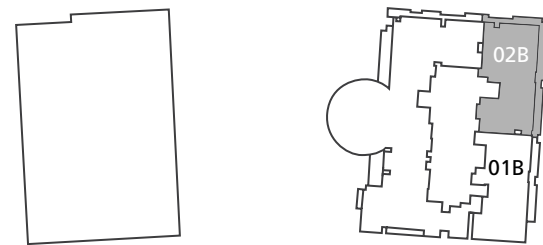
4 BEDROOMS

- Type 1A -



FLOORS
17 to 18

Unit Area	2,349.01 - 2,349.22 sq.ft.
Balcony Area	165.98 - 519.79 sq.ft.
Total Area	2,515.20 - 2,868.80 sq.ft.

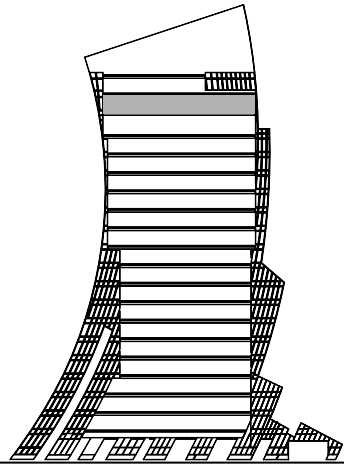


All pictures, plans, layouts, information, data and details included in this brochure are indicative only and may change at any time up to the final 'as built' status in accordance with final designs of the project, regulatory approvals and planning permissions. All accessories and interior finishes such as wallpaper, chandeliers, furniture, electronics, white goods, curtains, hard and soft landscaping, pavements, features, gym, swimming pool(s) and other elements displayed in the brochure, or within the show apartment or between the plot boundary and the unit, are not part of the unit and are shown for illustrative purposes only.



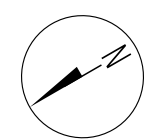
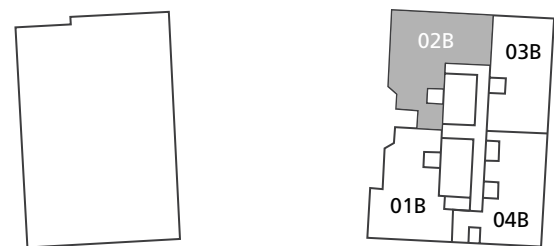
4 BEDROOMS

- Type 2 -



FLOOR
18

Unit Area	2,835.54 sq.ft.
Balcony Area	491.26 sq.ft.
Total Area	3,326.80 sq.ft.

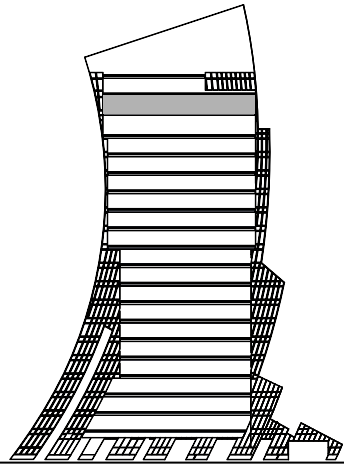


All pictures, plans, layouts, information, data and details included in this brochure are indicative only and may change at any time up to the final 'as built' status in accordance with final designs of the project, regulatory approvals and planning permissions. All accessories and interior finishes such as wallpaper, chandeliers, furniture, electronics, white goods, curtains, hard and soft landscaping, pavements, features, gym, swimming pool(s) and other elements displayed in the brochure, or within the show apartment or between the plot boundary and the unit, are not part of the unit and are shown for illustrative purposes only.



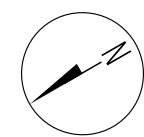
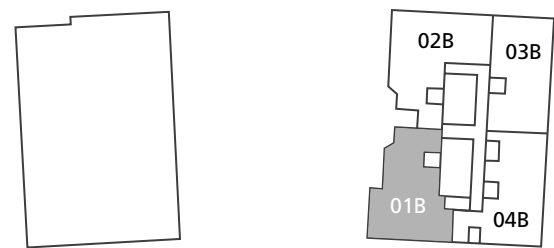
4 BEDROOMS

- Type 3 -



FLOOR 18

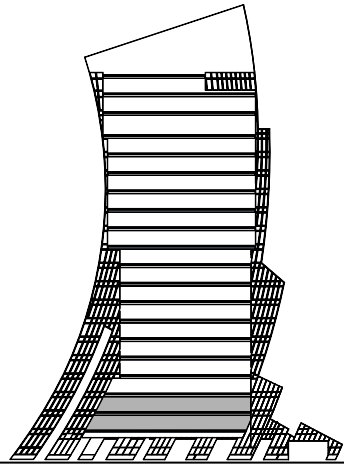
Unit Area	2,503.15 sq.ft.
Balcony Area	359.08 sq.ft.
Total Area	2,862.23 sq.ft.



All pictures, plans, layouts, information, data and details included in this brochure are indicative only and may change at any time up to the final 'as built' status in accordance with final designs of the project, regulatory approvals and planning permissions. All accessories and interior finishes such as wallpaper, chandeliers, furniture, electronics, white goods, curtains, hard and soft landscaping, pavements, features, gym, swimming pool(s) and other elements displayed in the brochure, or within the show apartment or between the plot boundary and the unit, are not part of the unit and are shown for illustrative purposes only.

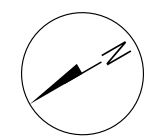


4 BEDROOMS DUPLEX – Type 2 –



FLOORS 1 & 2

Unit Area	3,264.91 sq.ft.
Balcony Area	1,311.37 sq.ft.
Total Area	4,576.28 sq.ft.



LOWER LEVEL

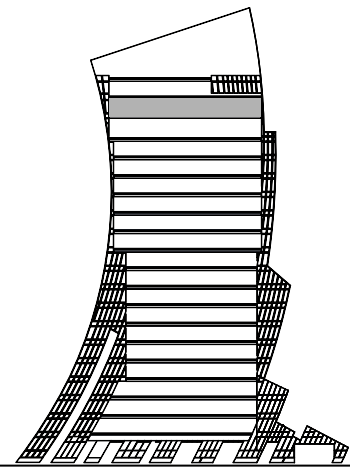


UPPERLEVEL

All pictures, plans, layouts, information, data and details included in this brochure are indicative only and may change at any time up to the final 'as built' status in accordance with final designs of the project, regulatory approvals and planning permissions. All accessories and interior finishes such as wallpaper, chandeliers, furniture, electronics, white goods, curtains, hard and soft landscaping, pavements, features, gym, swimming pool(s) and other elements displayed in the brochure, or within the show apartment or between the plot boundary and the unit, are not part of the unit and are shown for illustrative purposes only.

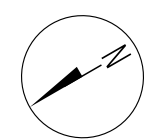
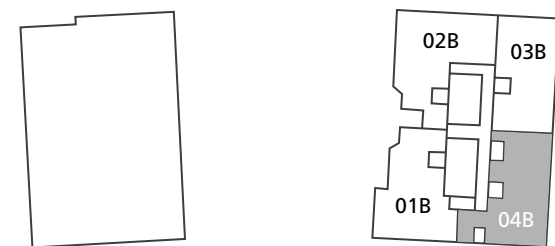
4 BEDROOMS

- Type 4 -



FLOOR 18

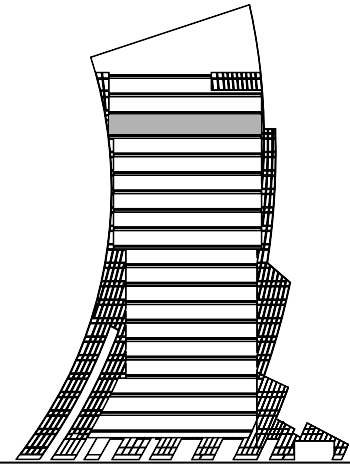
Unit Area	2,578.49 sq.ft.
Balcony Area	89.66 sq.ft.
Total Area	2,668.16 sq.ft.



All pictures, plans, layouts, information, data and details included in this brochure are indicative only and may change at any time up to the final 'as built' status in accordance with final designs of the project, regulatory approvals and planning permissions. All accessories and interior finishes such as wallpaper, chandeliers, furniture, electronics, white goods, curtains, hard and soft landscaping, pavements, features, gym, swimming pool(s) and other elements displayed in the brochure, or within the show apartment or between the plot boundary and the unit, are not part of the unit and are shown for illustrative purposes only.

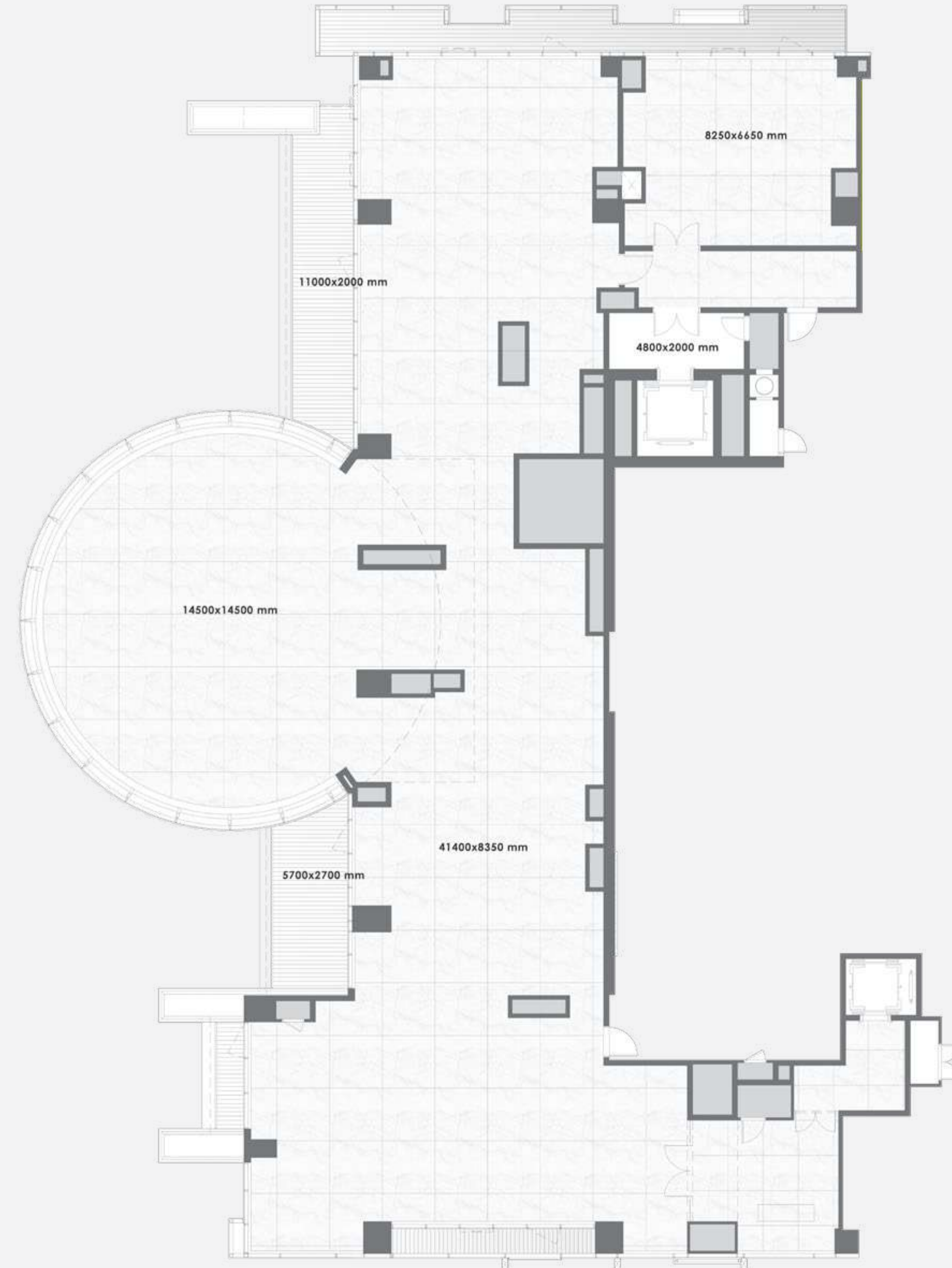
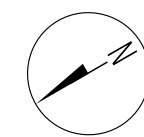
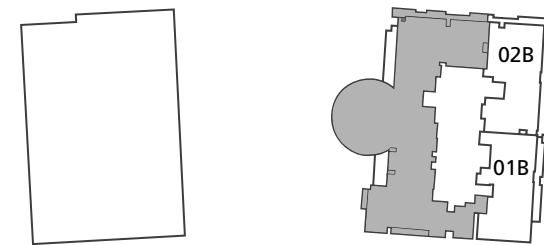


THE PENTHOUSE



FLOOR 17

Unit Area	7,357.35 sq.ft.
Balcony Area	849.70 sq.ft.
Total Area	8,207.05 sq.ft.



All pictures, plans, layouts, information, data and details included in this brochure are indicative only and may change at any time up to the final 'as built' status in accordance with final designs of the project, regulatory approvals and planning permissions. All accessories and interior finishes such as wallpaper, chandeliers, furniture, electronics, white goods, curtains, hard and soft landscaping, pavements, features, gym, swimming pool(s) and other elements displayed in the brochure, or within the show apartment or between the plot boundary and the unit, are not part of the unit and are shown for illustrative purposes only.

DAR AL ARKAN

BUILDING YOUR TRUST



Imagine a partner that anticipates your needs, understands your aspirations, and celebrates your successes. A partner that cuts through all the red tape and instead offers you on a golden platter the ideal home planned by world-class architects, built with world-class materials, designed by icons of fashion and managed & maintained by the top experts. And this commitment to delivering the highest quality projects hasn't wavered for the past 27 years. **This is Dar Al Arkan.**

—
15,000

residential units delivered

—
500,000 SQM

of commercial space

—
OPERATING ON
3 CONTINENTS

—
SAR 31 BILLION

in assets (month 2021)

—
SAR 11 BILLION

in capital (month 2021)

—
SAUDI STOCK
EXCHANGE

listed



DAR AL ARKAN