



WAVES
AT THE WATERFRONT DISTRICT



SOBHA HARTLAND



Welcome to the
Waterfront District
at Sobha Hartland



ABOUT WAVES

Hartland Waves, by the Waterfront District, is a crisp clean architecture that stands tall in front of the 1.8 km boardwalk that Sobha Hartland enjoys on its waterfront side. The façade is a simple play of horizontal and vertical forms that give uninterrupted 360-degree views to the tower, that will enjoy the sunrises and sunsets of every beautiful day. The two acute corners have a vertical emphasis leading the eye to a light-weight floating roof giving a sense of breeziness and lightness to it.

Hartland Waves will be the first tower across the Waterfront District of Sobha Hartland.

WHY SHOULD YOU CHOOSE WAVES?

THE FIRST TOWER

- *The 1st tower along the waterfront side of the already established Sobha Hartland community.*

UNINTERRUPTED VIEWS

- *Views of Dubai Skyline, Ras Al Khor Wildlife Sanctuary, Meydan Racecourse, Meydan One Tower, Meydan One Mall and Dubai Creek.*

WATERFRONT PROMENADE LIFESTYLE

- *A complete offering of food and beverage outlets, at the base of the tower.*

FULLY GLAZED LIVING ROOMS

- *Framed curtain glass and beautiful floor to ceiling windows give you unbeatable views of lush greenery and plenty of natural light.*

IMPECCABLE AMENITIES

- *Infinity edge pool, kids play area, indoor-outdoor gym area, yoga zone, walking track, and outdoor barbeque.*

5 LEVEL PODIUM

- *Dedicated shaded car parking for all apartments*

A PRIVATE TERRACE FOR EACH APARTMENT

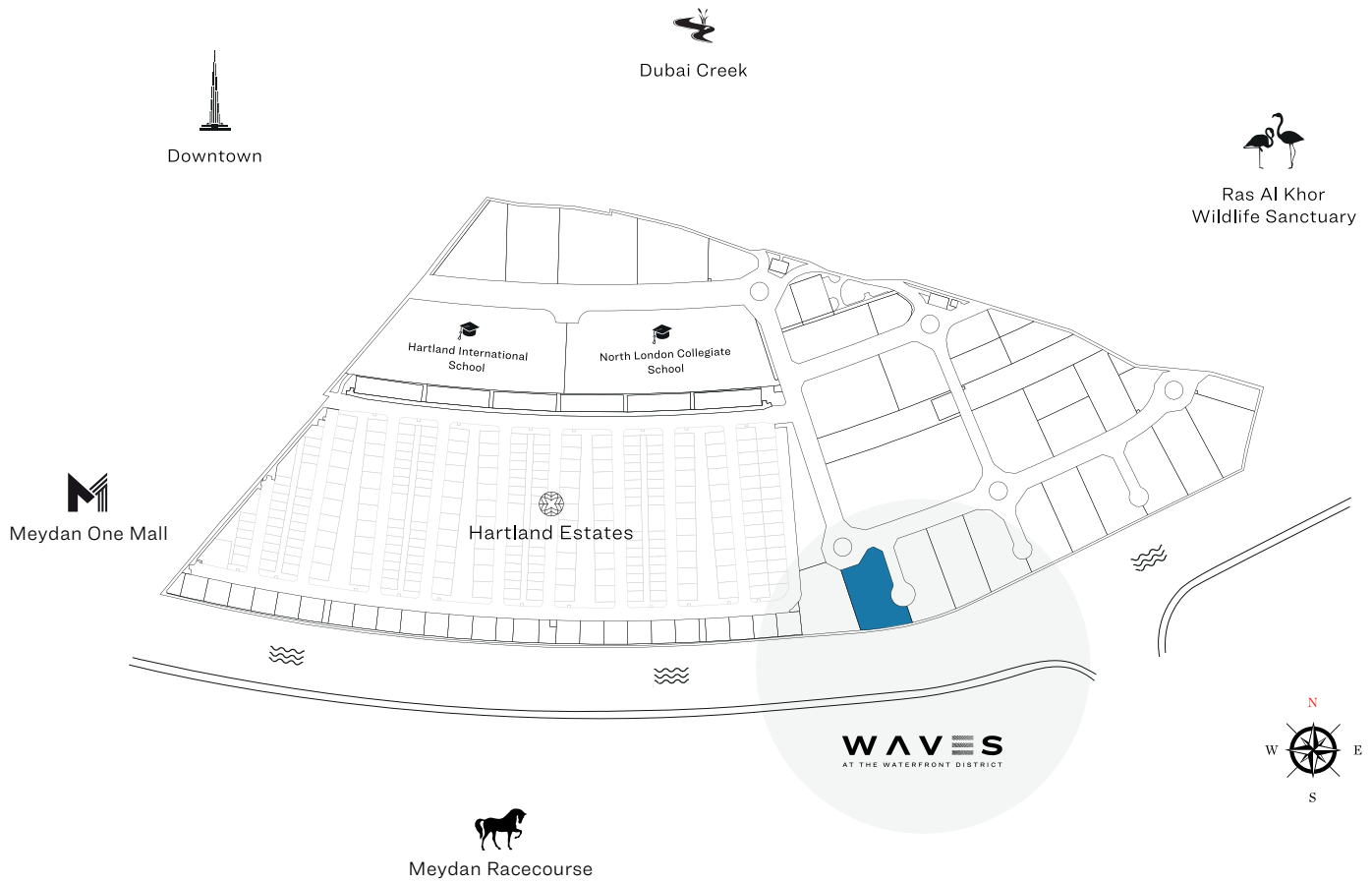
- *Built to enjoy lush uninterrupted views, forever*

WHY NOW

SPECIAL LAUNCH OFFERS:

- One Price Across all Floors
- 2 Year **Post Handover** Payment Plan
- 50% **DLD Fees** Waiver
- 2 Year **Service Charge** Waiver
- Luxury Waterfront Apartments Starting from **AED 975,000**

LOCATION IN THE MASTER PLAN



APARTMENT FEATURES



Variety of unit plans



Impeccable interiors



Covered car parking

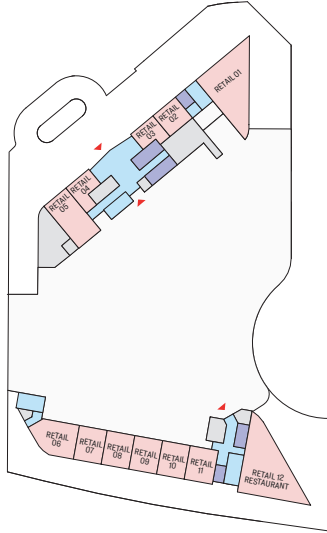


Choice of balcony in units

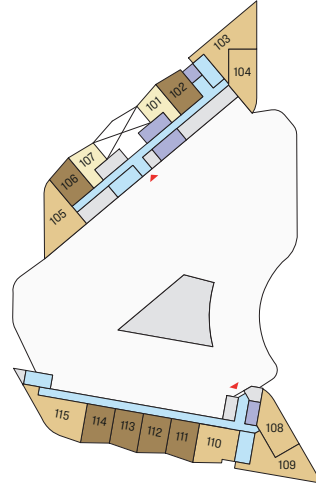


Bedroom wardrobe in all units

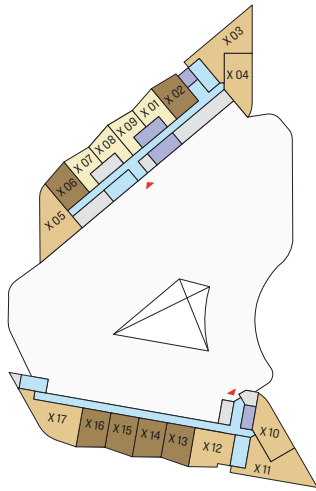
FLOOR PLAN LAYOUT



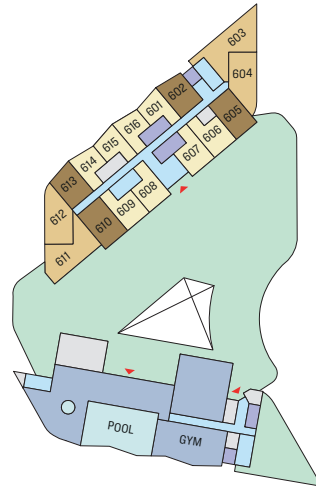
GROUND LEVEL



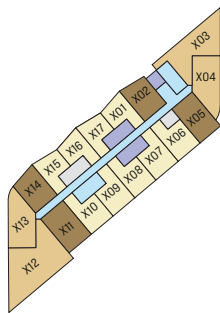
PODIUM 01



LEVEL 02 TO LEVEL 05



LEVEL 06



LEVEL 07 - LEVEL 35

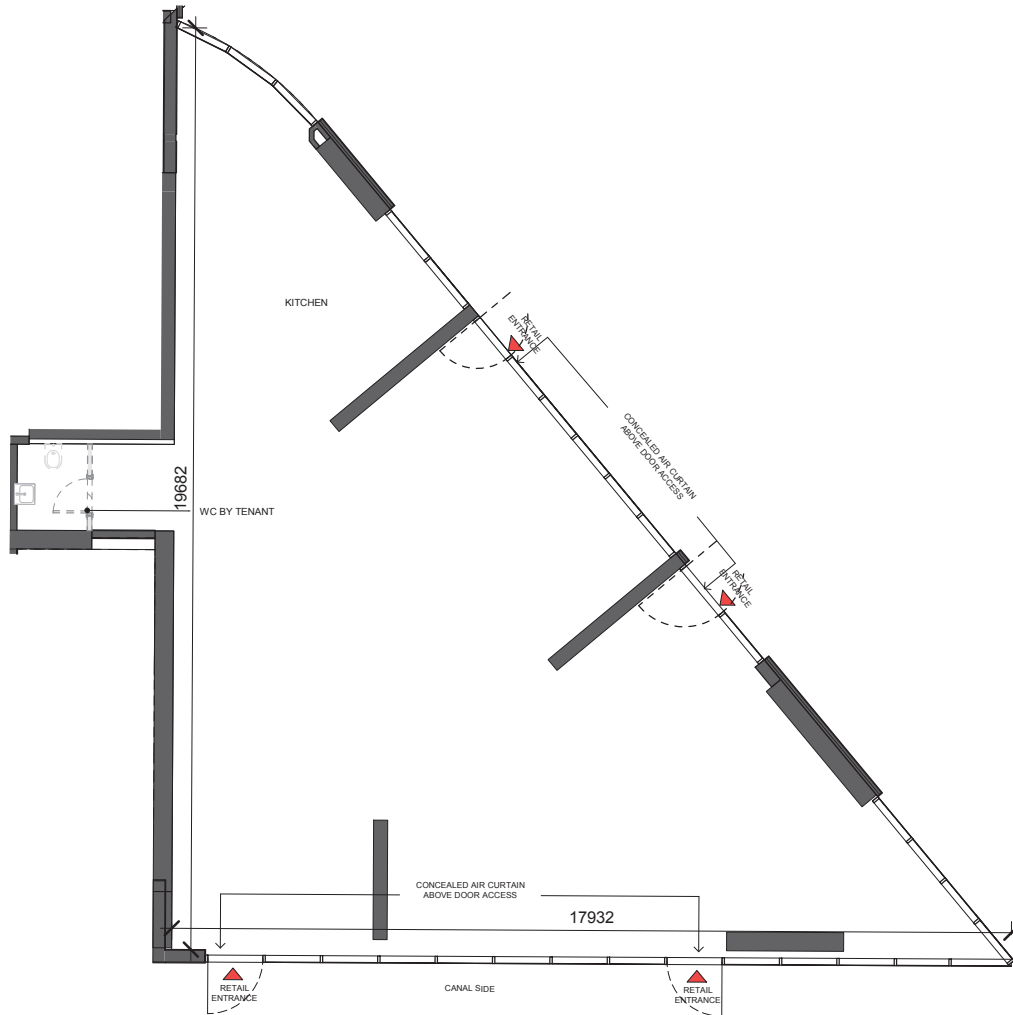
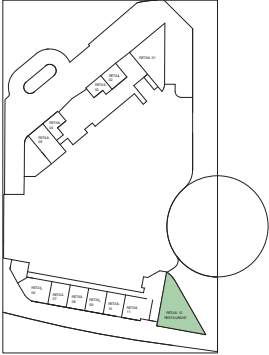
- 1 BED UNIT
- 1 BED + STUDY UNIT
- 2 BED UNIT
- COMMERCIAL (1 RESTAURANT , 11 RETAIL)
- LOBBIES, CORRIDORS & STAIRS
- LIFTS
- SERVICES
- AMENITIES
- SWIMMING POOL
- LANDSCAPE

RESTAURANT PLAN

TOTAL SALEABLE AREA - RESTAURANT	
200.11 SQ.M	2153.97 SQ.FT

LEVEL	UNIT NUMBER
G	RETAIL 12 RESTAURANT

NOTE: WC & FINISHES BY TENANT



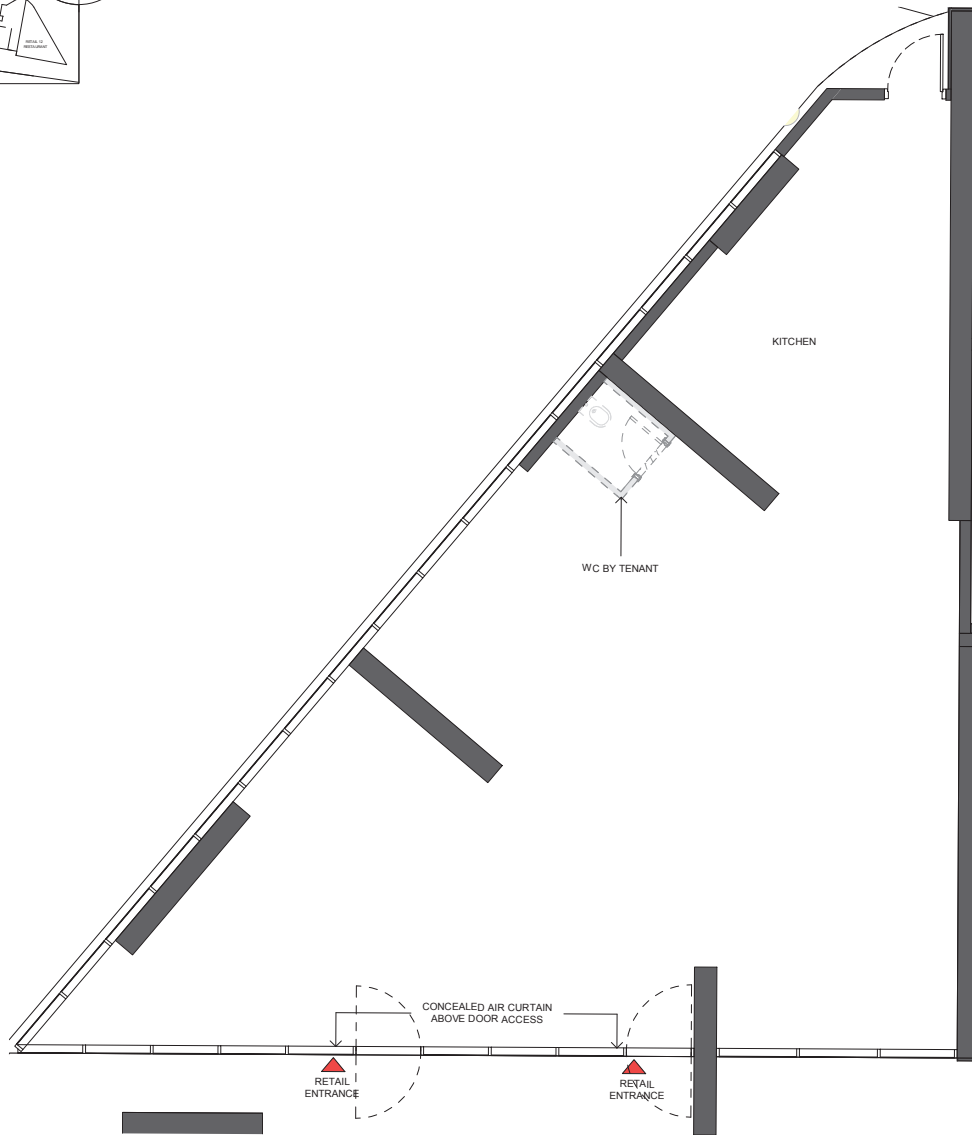
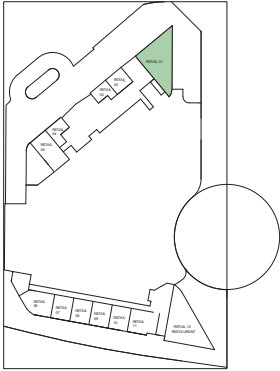
Disclaimer: 1. All dimensions are in metric, measured to wall finishes. 2. All materials, dimensions & drawings are approximate. 3. Information is subject to change without notice, at developer's absolute discretion. 4. Actual area may vary from the stated area. 5. Drawing are not to scale. 6. All images used are for illustrative purpose only and do not represent the actual size, features, specifications, fittings and furnishings. 7. The developer reserves the right to make revisions/ alterations, at its absolute discretion, without any liability whatsoever.

RETAIL UNIT 01

TOTAL SALEABLE AREA - RETAIL -01
167.91 SQ.M 1807.37 SQ.FT

LEVEL UNIT NUMBER
G RETAIL 01

NOTE: WC & FINISHES BY TENANT



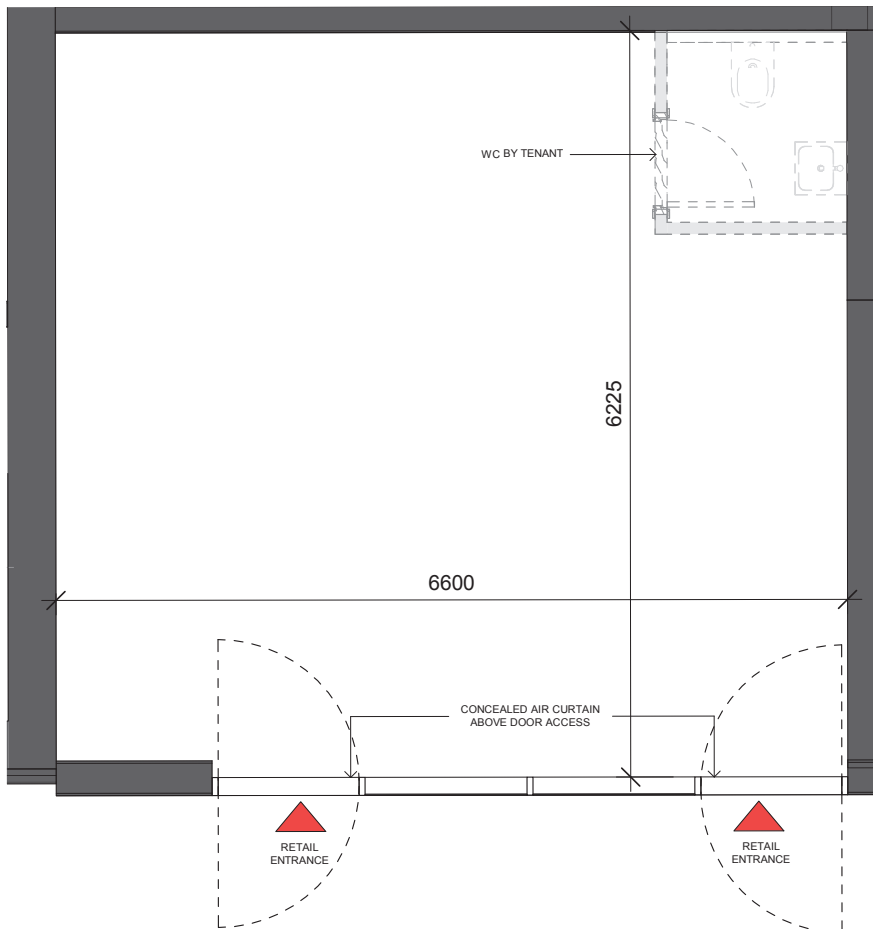
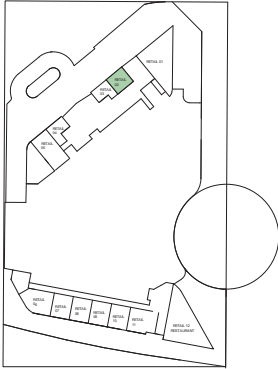
Disclaimer: 1. All dimensions are in metric, measured to wall finishes. 2. All materials, dimensions & drawings are approximate. 3. Information is subject to change without notice, at developer's absolute discretion. 4. Actual area may vary from the stated area. 5. Drawing are not to scale. 6. All images used are for illustrative purpose only and do not represent the actual size, features, specifications, fittings and furnishings. 7. The developer reserves the right to make revisions/ alterations, at its absolute discretion, without any liability whatsoever.

RETAIL UNIT 02

TOTAL SALEABLE AREA - RETAIL -02
45.11 SQ.M 485.56 SQ.FT

LEVEL UNIT NUMBER
G RETAIL UNIT 02

NOTE: WC & FINISHES BY TENANT



Disclaimer: 1. All dimensions are in metric, measured to wall finishes. 2. All materials, dimensions & drawings are approximate. 3. Information is subject to change without notice, at developer's absolute discretion. 4. Actual area may vary from the stated area. 5. Drawing are not to scale. 6. All images used are for illustrative purpose only and do not represent the actual size, features, specifications, fittings and furnishings. 7. The developer reserves the right to make revisions/ alterations, at its absolute discretion, without any liability whatsoever.

RETAIL UNIT 03

TOTAL SALEABLE AREA - RETAIL -03

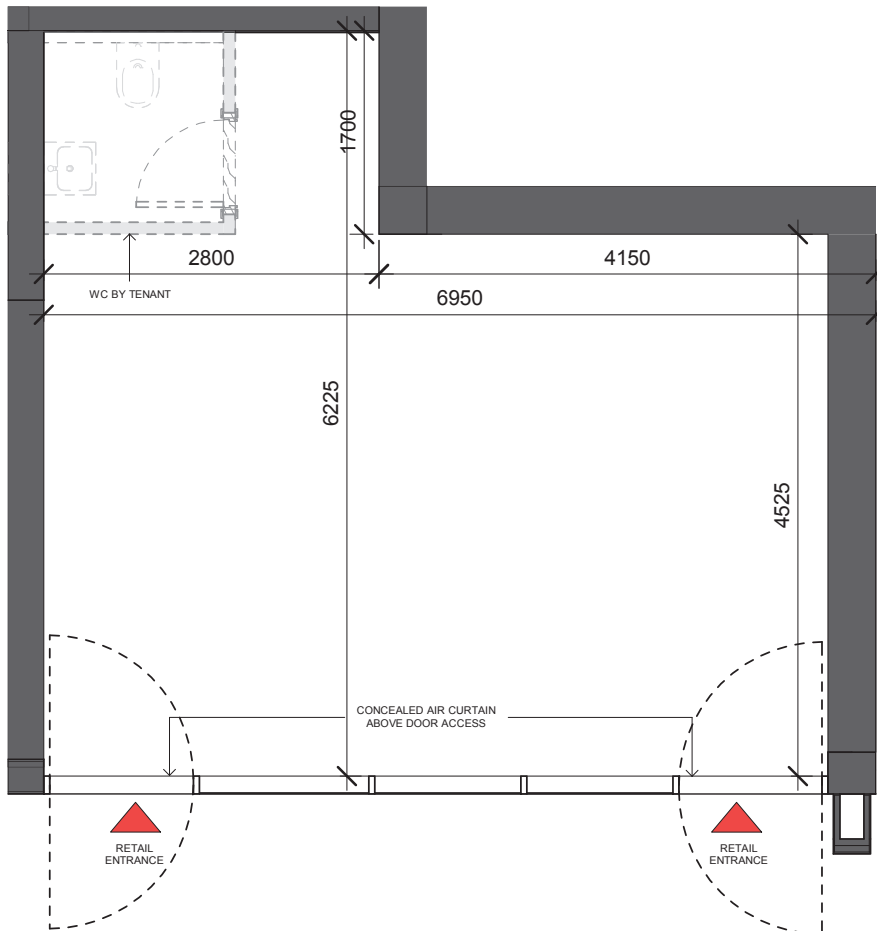
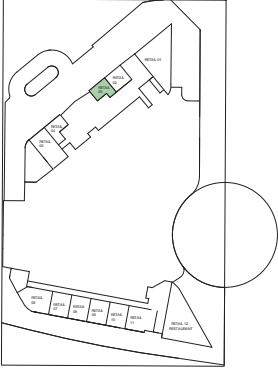
38.64 SQ.M

415.92 SQ.FT

LEVEL
G

UNIT NUMBER
RETAIL UNIT 03

NOTE: WC & FINISHES BY TENANT



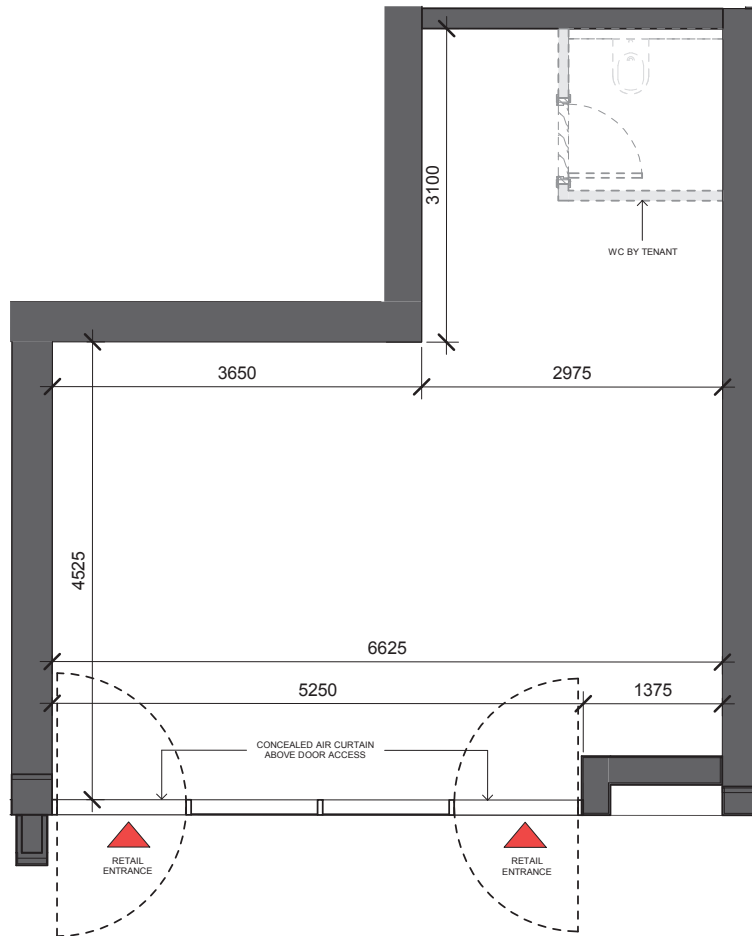
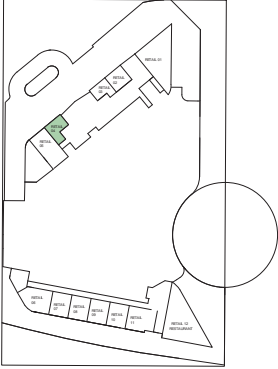
Disclaimer: 1. All dimensions are in metric, measured to wall finishes. 2. All materials, dimensions & drawings are approximate. 3. Information is subject to change without notice, at developer's absolute discretion. 4. Actual area may vary from the stated area. 5. Drawing are not to scale. 6. All images used are for illustrative purpose only and do not represent the actual size, features, specifications, fittings and furnishings. 7. The developer reserves the right to make revisions/ alterations, at its absolute discretion, without any liability whatsoever.

RETAIL UNIT 04

TOTAL SALEABLE AREA - RETAIL -04
43.54 SQ.M 468.66 SQ.FT

LEVEL UNIT NUMBER
G RETAIL UNIT 04

NOTE: WC & FINISHES BY TENANT

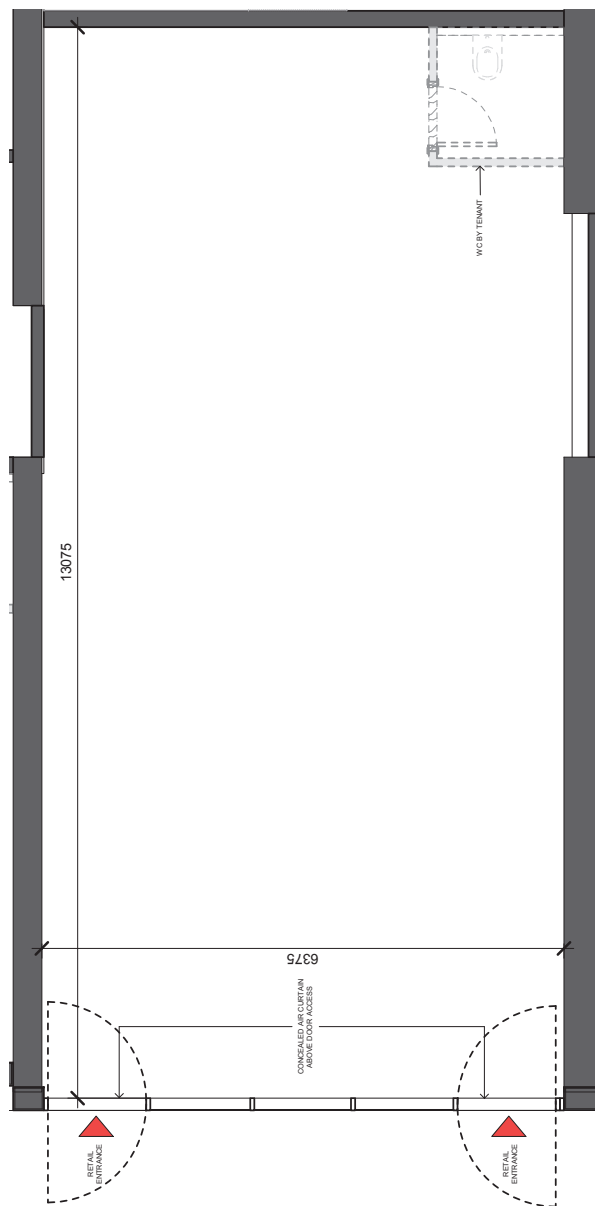
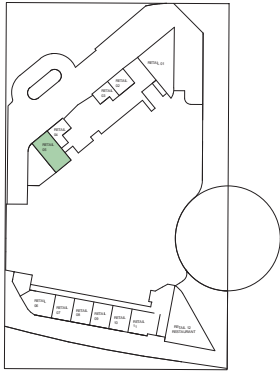


Disclaimer: 1. All dimensions are in metric, measured to wall finishes. 2. All materials, dimensions & drawings are approximate. 3. Information is subject to change without notice, at developer's absolute discretion. 4. Actual area may vary from the stated area. 5. Drawing are not to scale. 6. All images used are for illustrative purpose only and do not represent the actual size, features, specifications, fittings and furnishings. 7. The developer reserves the right to make revisions/ alterations, at its absolute discretion, without any liability whatsoever.

RETAIL UNIT 05

TOTAL SALEABLE AREA - RETAIL -05	
90.71 SQ.M	976.39 SQ.FT
LEVEL	UNIT NUMBER
G	RETAIL UNIT 05

NOTE: WC & FINISHES BY TENANT

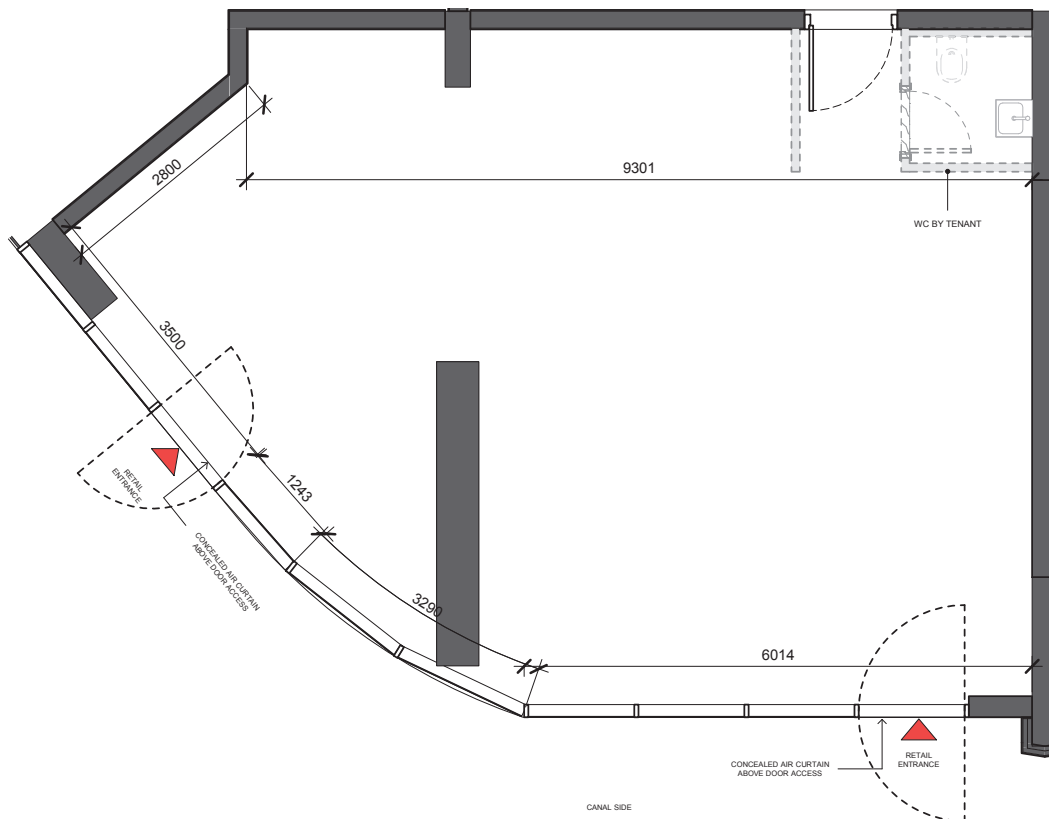
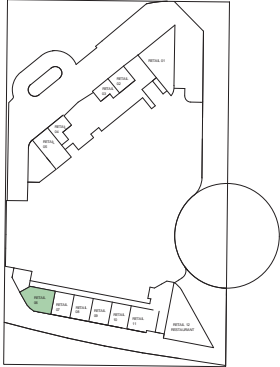


Disclaimer: 1. All dimensions are in metric, measured to wall finishes. 2. All materials, dimensions & drawings are approximate. 3. Information is subject to change without notice, at developer's absolute discretion. 4. Actual area may vary from the stated area. 5. Drawing are not to scale. 6. All images used are for illustrative purpose only and do not represent the actual size, features, specifications, fittings and furnishings. 7. The developer reserves the right to make revisions/ alterations, at its absolute discretion, without any liability whatsoever.

RETAIL UNIT 06

TOTAL SALEABLE AREA - RETAIL -06	
82.04 SQ.M	883.07 SQ.FT
LEVEL	UNIT NUMBER
G	RETAIL UNIT 06

NOTE: WC & FINISHES BY TENANT



Disclaimer: 1. All dimensions are in metric, measured to wall finishes. 2. All materials, dimensions & drawings are approximate. 3. Information is subject to change without notice, at developer's absolute discretion. 4. Actual area may vary from the stated area. 5. Drawing are not to scale. 6. All images used are for illustrative purpose only and do not represent the actual size, features, specifications, fittings and furnishings. 7. The developer reserves the right to make revisions/ alterations, at its absolute discretion, without any liability whatsoever.

RETAIL UNIT 07

TOTAL SALEABLE AREA - RETAIL -07

56.69 SQ.M

610.21 SQ.FT

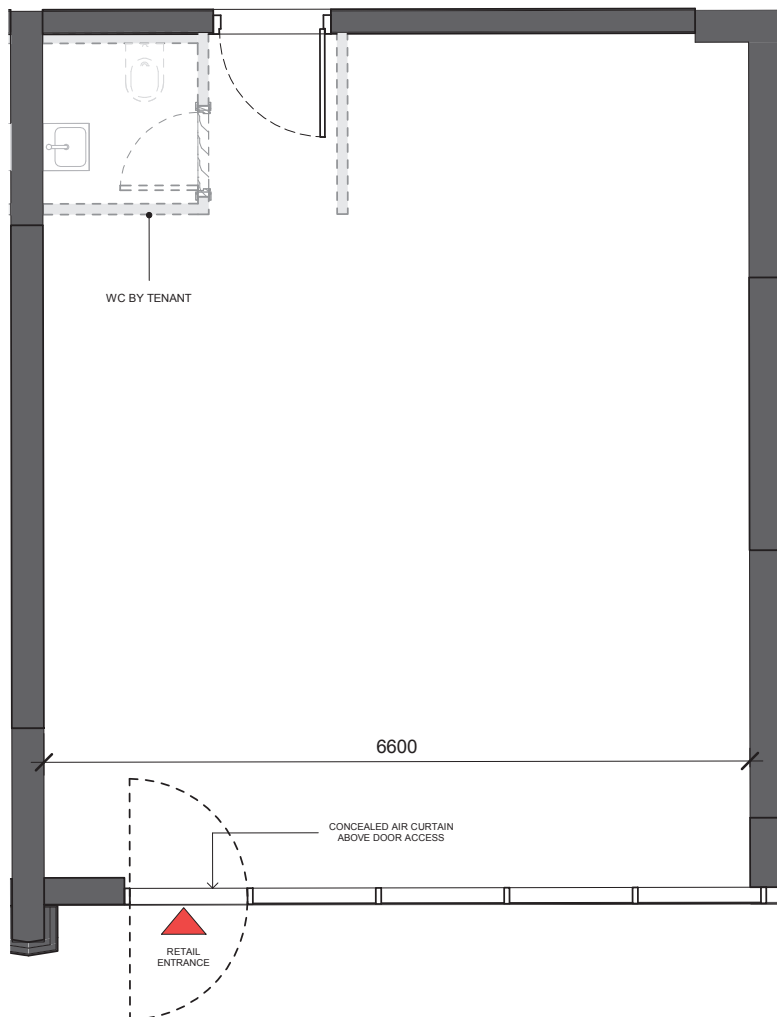
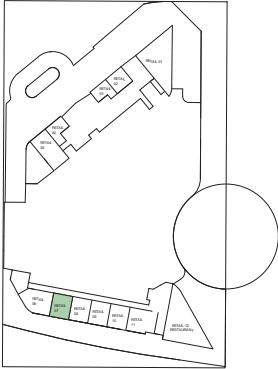
LEVEL

G

UNIT NUMBER

RETAIL UNIT 07

NOTE: WC & FINISHES BY TENANT

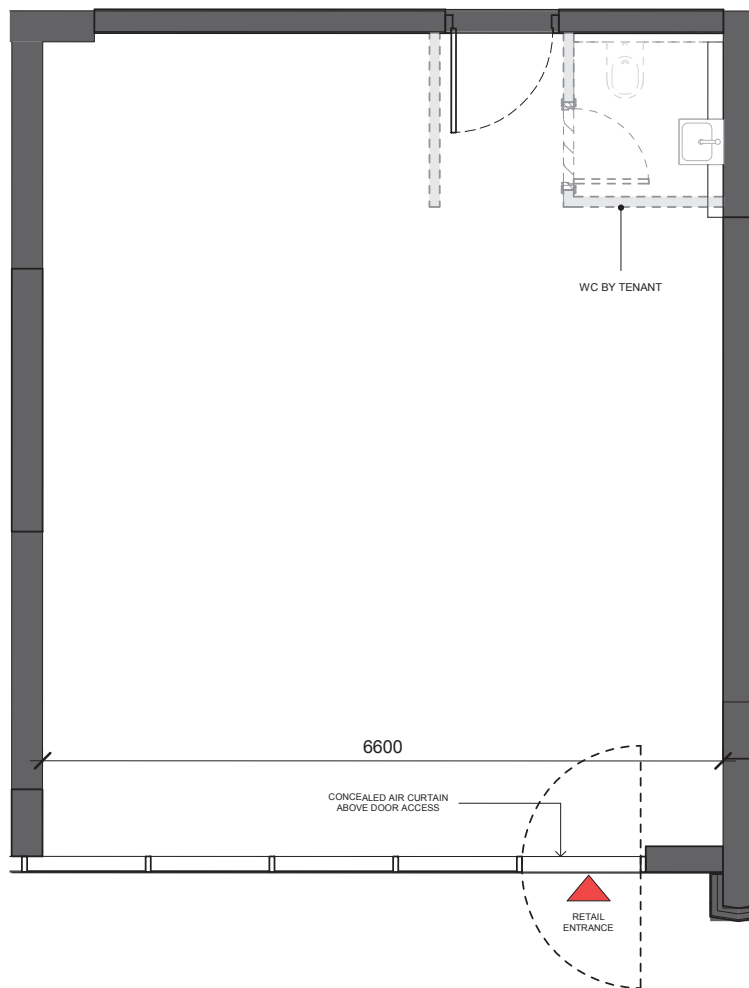
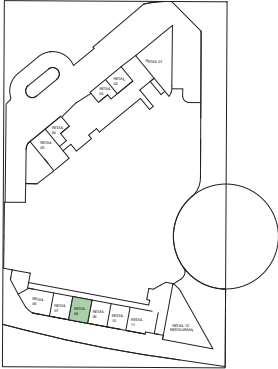


Disclaimer: 1. All dimensions are in metric, measured to wall finishes. 2. All materials, dimensions & drawings are approximate. 3. Information is subject to change without notice, at developer's absolute discretion. 4. Actual area may vary from the stated area. 5. Drawing are not to scale. 6. All images used are for illustrative purpose only and do not represent the actual size, features, specifications, fittings and furnishings. 7. The developer reserves the right to make revisions/ alterations, at its absolute discretion, without any liability whatsoever.

RETAIL UNIT 08

TOTAL SALEABLE AREA - RETAIL -08	
56.68 SQ.M	610.10 SQ.FT
LEVEL	UNIT NUMBER
G	RETAIL UNIT 08

NOTE: WC & FINISHES BY TENANT



Disclaimer: 1. All dimensions are in metric, measured to wall finishes. 2. All materials, dimensions & drawings are approximate. 3. Information is subject to change without notice, at developer's absolute discretion. 4. Actual area may vary from the stated area. 5. Drawing are not to scale. 6. All images used are for illustrative purpose only and do not represent the actual size, features, specifications, fittings and furnishings. 7. The developer reserves the right to make revisions/ alterations, at its absolute discretion, without any liability whatsoever.

RETAIL UNIT 09

TOTAL SALEABLE AREA - RETAIL -09

55.84 SQ.M

601.06 SQ.FT

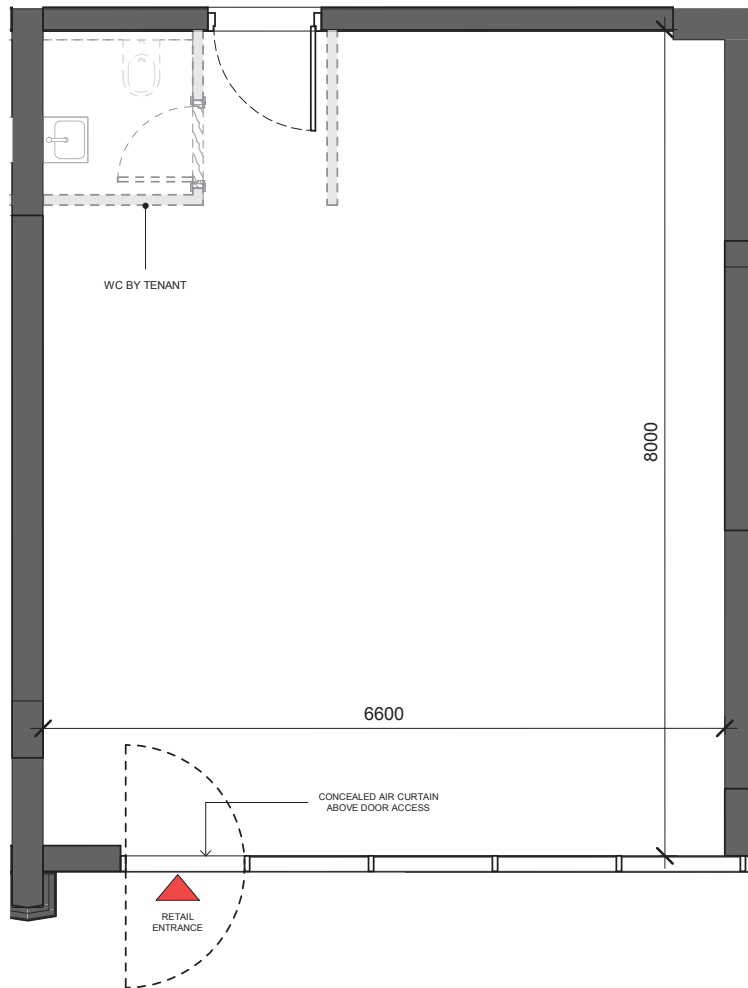
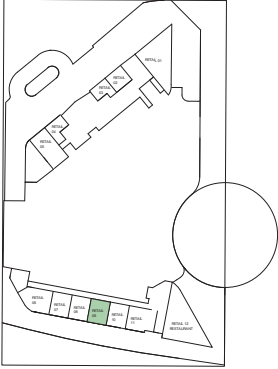
LEVEL

G

UNIT NUMBER

RETAIL UNIT 09

NOTE: WC & FINISHES BY TENANT



Disclaimer: 1. All dimensions are in metric, measured to wall finishes. 2. All materials, dimensions & drawings are approximate. 3. Information is subject to change without notice, at developer's absolute discretion. 4. Actual area may vary from the stated area. 5. Drawing are not to scale. 6. All images used are for illustrative purpose only and do not represent the actual size, features, specifications, fittings and furnishings. 7. The developer reserves the right to make revisions/ alterations, at its absolute discretion, without any liability whatsoever.

RETAIL UNIT 10

TOTAL SALEABLE AREA - RETAIL -10

55.83 SQ.M

600.95 SQ.FT

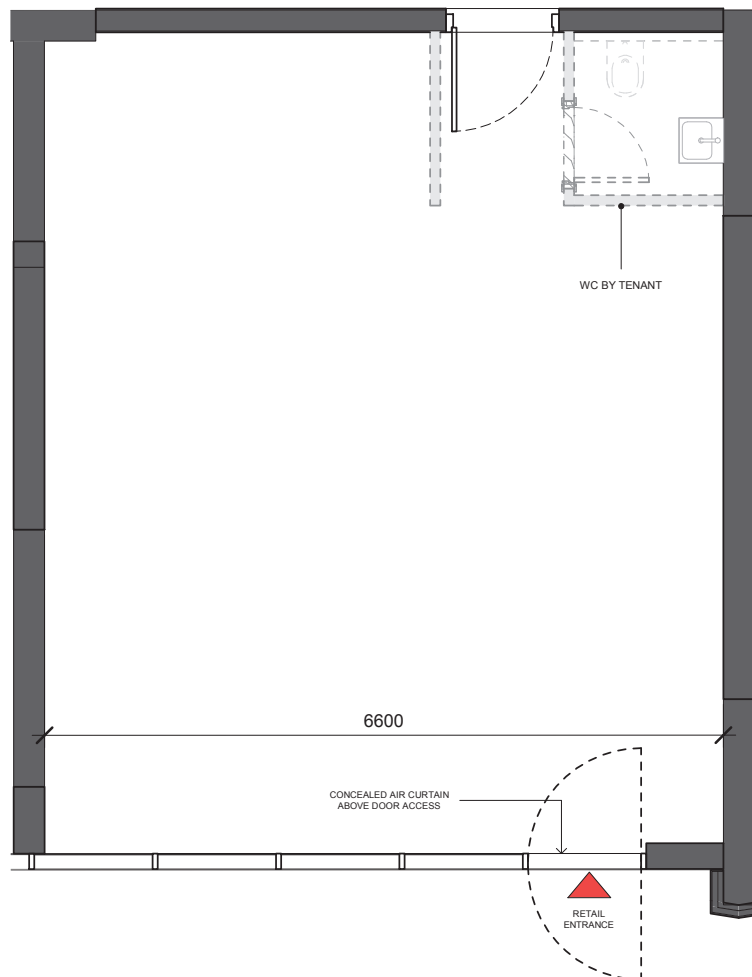
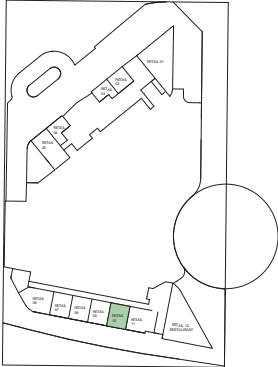
LEVEL

G

UNIT NUMBER

RETAIL UNIT 10

NOTE: WC & FINISHES BY TENANT



Disclaimer: 1. All dimensions are in metric, measured to wall finishes. 2. All materials, dimensions & drawings are approximate. 3. Information is subject to change without notice, at developer's absolute discretion. 4. Actual area may vary from the stated area. 5. Drawing are not to scale. 6. All images used are for illustrative purpose only and do not represent the actual size, features, specifications, fittings and furnishings. 7. The developer reserves the right to make revisions/ alterations, at its absolute discretion, without any liability whatsoever.

RETAIL UNIT 11

TOTAL SALEABLE AREA - RETAIL -11

84.61 SQ.M

910.73 SQ.FT

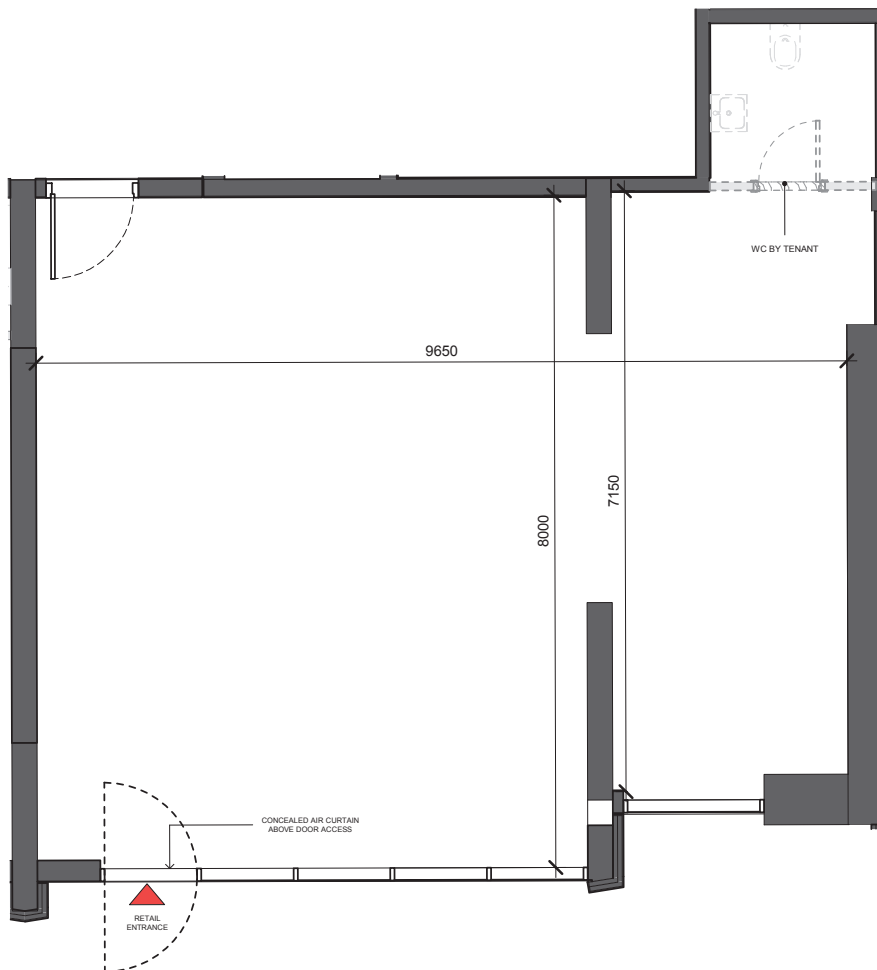
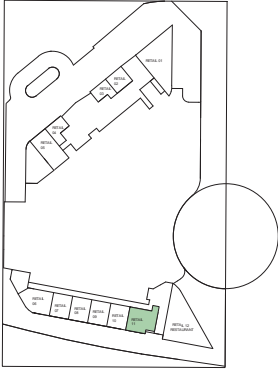
LEVEL

G

UNIT NUMBER

RETAIL UNIT 11

NOTE: WC & FINISHES BY TENANT



Disclaimer: 1. All dimensions are in metric, measured to wall finishes. 2. All materials, dimensions & drawings are approximate. 3. Information is subject to change without notice, at developer's absolute discretion. 4. Actual area may vary from the stated area. 5. Drawing are not to scale. 6. All images used are for illustrative purpose only and do not represent the actual size, features, specifications, fittings and furnishings. 7. The developer reserves the right to make revisions/ alterations, at its absolute discretion, without any liability whatsoever.

ABOUT SOBHA HARTLAND



An 8mn sq. ft. (183 acres) Marquee Development by Sobha Realty in Prime Central Dubai

30% (2.4mn sq. ft.) open and green spaces, 8000+ trees across the community

1.8km boardwalk overlooking the waterfront



Close proximity to major landmarks:

2 mins from 2 International Schools

12 mins from Downtown Dubai

12 mins from Ras Al Khor Wildlife sanctuary

20 mins from International Airport



Located in MBR City, one of the leading investment destination in Dubai.



Offers attractive returns and incremental ROI of up to 8%.



A World-class project developed with meticulous precision to deliver the Sobha Signature Quality from inception to completion.



Apartments & Villas in varying layouts and sizes to suit your lifestyle.



SOBHA
REALTY